

Product datasheet for **TP304314L**

EAF2 (NM_018456) Human Recombinant Protein

Product data:

Product Type: Recombinant Proteins

Description: Recombinant protein of human ELL associated factor 2 (EAF2), 1 mg

Species: Human

Expression Host: HEK293T

**Expression cDNA Clone
or AA Sequence:** >RC204314 protein sequence
Red=Cloning site **Green**=Tags(s)

MNSAAGFSHLDRRERVVLKLGESFEKQPRCAFHTVRYDFKPPASIDTSSEGYLEVGEQVITLNPNEGST
PPVTVFKGSKKPYLKECILINHDTGECRLEKLSNITVKKTRVEGSSKIQRKEQQQQMWNARSARTPNL
VKHSPSEDKMSPASPIDDIERELKAEASLMDQMSSCDSSSDSKSSSSSSSEDSSSDSEDEDCKSSSTDTG
NCVSGHPTMTQYRIPDIDASHNRFRDNSGLLMNTRLRNDLQLSSESGSDSD

TRTRPLEQKLISEEDLAANDILDYKDDDDKV

Tag: C-Myc/DDK

Predicted MW: 28.6 kDa

Concentration: >0.05 µg/µL as determined by microplate BCA method

Purity: > 80% as determined by SDS-PAGE and Coomassie blue staining

Buffer: 25 mM Tris-HCl, 100 mM glycine, pH 7.3, 10% glycerol

Preparation: Recombinant protein was captured through anti-DDK affinity column followed by conventional chromatography steps.

Note: For testing in cell culture applications, please filter before use. Note that you may experience some loss of protein during the filtration process.

Storage: Store at -80°C.

Stability: Stable for 12 months from the date of receipt of the product under proper storage and handling conditions. Avoid repeated freeze-thaw cycles.

RefSeq: [NP_060926](#)

Locus ID: 55840

UniProt ID: [Q96C11](#)



[View online »](#)

RefSeq Size: 1024

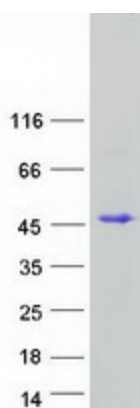
Cytogenetics: 3q13.33

RefSeq ORF: 780

Synonyms: BM040; TRAITS; U19

Summary: Acts as a transcriptional transactivator of TCEA1 elongation activity (By similarity). Acts as a transcriptional transactivator of ELL and ELL2 elongation activities. Potent inducer of apoptosis in prostatic and non-prostatic cell lines. Inhibits prostate tumor growth in vivo. [UniProtKB/Swiss-Prot Function]

Product images:



Coomassie blue staining of purified EAF2 protein (Cat# [TP304314]). The protein was produced from HEK293T cells transfected with EAF2 cDNA clone (Cat# [RC204314]) using MegaTran 2.0 (Cat# [TT210002]).