

## Product datasheet for **TP304314**

### EAF2 (NM\_018456) Human Recombinant Protein

#### Product data:

Product Type:	Recombinant Proteins
Description:	Recombinant protein of human ELL associated factor 2 (EAF2), 20 µg
Species:	Human
Expression Host:	HEK293T
Expression cDNA Clone or AA Sequence:	>RC204314 protein sequence Red=Cloning site Green=Tags(s)

MNSAAGFSLDRRERVLKLGESFEKQPRCAFHTVRYDFKPPASIDTSSEGYLEVGEQVITLTPNIEGST  
PPVTVFKGSKKPYLKECILIIINHDTGECRLEKLSSNITVKKTRVEGSSKIQRKEQQQQMWNSARTPNL  
VKHSPSEDKMSPASPIDDIERELKAEASLMDQMSSCDSSSDSKSSSSSSSEDSSSDSEDEDCKSSSTDTG  
NCVSGHPTMTQYRIPDIDASHNRFRDNSGLLMNTRLNDLQLESSEGSDD

TRTRPLEQKLISEEDLAANDILDYKDDDDKV

Tag:	C-Myc/DDK
Predicted MW:	28.6 kDa
Concentration:	>0.05 µg/µL as determined by microplate BCA method
Purity:	> 80% as determined by SDS-PAGE and Coomassie blue staining
Buffer:	25 mM Tris-HCl, 100 mM glycine, pH 7.3, 10% glycerol
Preparation:	Recombinant protein was captured through anti-DDK affinity column followed by conventional chromatography steps.
Note:	For testing in cell culture applications, please filter before use. Note that you may experience some loss of protein during the filtration process.
Storage:	Store at -80°C.
Stability:	Stable for 12 months from the date of receipt of the product under proper storage and handling conditions. Avoid repeated freeze-thaw cycles.
RefSeq:	<u>NP_060926</u>
Locus ID:	55840
UniProt ID:	<u>Q96C11</u>



[View online »](#)

RefSeq Size: 1024

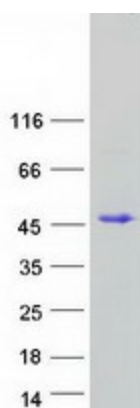
Cytogenetics: 3q13.33

RefSeq ORF: 780

Synonyms: BM040; TRAITS; U19

**Summary:** Acts as a transcriptional transactivator of TCEA1 elongation activity (By similarity). Acts as a transcriptional transactivator of ELL and ELL2 elongation activities. Potent inducer of apoptosis in prostatic and non-prostatic cell lines. Inhibits prostate tumor growth in vivo. [UniProtKB/Swiss-Prot Function]

### Product images:



Coomassie blue staining of purified EAF2 protein (Cat# TP304314). The protein was produced from HEK293T cells transfected with EAF2 cDNA clone (Cat# [RC204314]) using MegaTran 2.0 (Cat# [TT210002]).