

Product datasheet for **TP304308**

PARP3 (NM_005485) Human Recombinant Protein

Product data:

Product Type: Recombinant Proteins

Description: Recombinant protein of human poly (ADP-ribose) polymerase family, member 3 (PARP3), transcript variant 2, 20 µg

Species: Human

Expression Host: HEK293T

Expression cDNA Clone or AA Sequence: >RC204308 protein sequence
Red=Cloning site **Green**=Tags(s)

MAPKPKWVQTEGPEKKKGRQAGREEDPFRSTAEALKAIPA EKRIIRVDPTCPLSSNPGTQVYEDYNCTL
NQTNIENNNNKFYIIQLQDSNRFFTCWNRWGRVGEVGQSKINHFRLEDAKKDFEKKFREKTKNNWAER
DHFVSHPGKYTLIEVQAEDAQAQAVSEAEAVKVD RGPVRTVTKRVQPCSLDPATQKLITNIFSKEMFKNTMALMD
LDVKKMPLGKLSKQQIARGFEALEALEEALKGPTDGGQSLEELSSHFYTVIPHNFGHSQPPPINSPELLQ
AKKDMLLVLADIELAQALQAVSEAEKTVVEVPHPLDRDYQLLKCQLQLLD SGAP EYKVIQTYLEQTGSNH
RCPTLQHIWKVNQEGEEDRFQAHSKLG NRKLLWHGTNMAVVAAILTSGLRIMPHSGGRVKGKIYFASENS
KSAGYVIGMKCGAHVGYMFLGEVALGREHHINTDNPSLKSPPP GFDSVIARGHTEPDPTQDTELELDGQ
QVVPQGGQPVPCPEFSSSTFSQSEYLIYQESQCRLRYLLEVHL

TRTRPLEQKLISEEDLAANDILDYKDDDDKV

Tag: C-Myc/DDK

Predicted MW: 59.9 kDa

Concentration: >0.05 µg/µL as determined by microplate BCA method

Purity: > 80% as determined by SDS-PAGE and Coomassie blue staining

Buffer: 25 mM Tris-HCl, 100 mM glycine, pH 7.3, 10% glycerol

Preparation: Recombinant protein was captured through anti-DDK affinity column followed by conventional chromatography steps.

Note: For testing in cell culture applications, please filter before use. Note that you may experience some loss of protein during the filtration process.

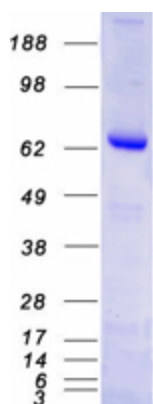
Storage: Store at -80°C.



[View online »](#)

Stability:	Stable for 12 months from the date of receipt of the product under proper storage and handling conditions. Avoid repeated freeze-thaw cycles.
RefSeq:	NP_005476
Locus ID:	10039
UniProt ID:	Q9Y6F1 , A0A024R318
RefSeq Size:	2360
Cytogenetics:	3p21.2
RefSeq ORF:	1599
Synonyms:	ADPRT3; ADPRTL2; ADPRTL3; ARTD3; IRT1; PADPRT-3
Summary:	The protein encoded by this gene belongs to the PARP family. These enzymes modify nuclear proteins by poly-ADP-ribosylation, which is required for DNA repair, regulation of apoptosis, and maintenance of genomic stability. This gene encodes the poly(ADP-ribosyl)transferase 3, which is preferentially localized to the daughter centriole throughout the cell cycle. Alternatively spliced transcript variants encoding different isoforms have been identified. [provided by RefSeq, Jul 2008]
Protein Families:	Druggable Genome
Protein Pathways:	Base excision repair

Product images:



Coomassie blue staining of purified PARP3 protein (Cat# TP304308). The protein was produced from HEK293T cells transfected with PARP3 cDNA clone (Cat# [RC204308]) using MegaTran 2.0 (Cat# [TT210002]).