

Product datasheet for TP304261M

KT112 (NM_138417) Human Recombinant Protein

Product data:

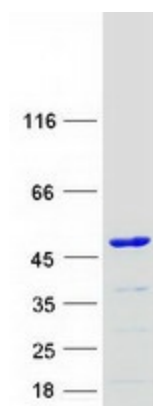
Product Type:	Recombinant Proteins
Description:	Recombinant protein of human KT112 homolog, chromatin associated (<i>S. cerevisiae</i>) (KT112), 100 µg
Species:	Human
Expression Host:	HEK293T
Expression cDNA Clone or AA Sequence:	>RC204261 protein sequence Red =Cloning site Green =Tags(s)
	MPLVVFCLPYSYGKSRRAEELRVALAAEGRAVYVVDAAVLGAEDPAVYGDSAREKALRGALRASVERRL SRHDWILDLSLNYIKGFRYELYCLARAARTPLCLVYCVRPGGPIAGPQVAGANENPGRNVSVSWRPRAEE DGRAQAAGSSVLRELHTADSVNGSAQADVPEKELEREESGAAESPALVTPDSEKSAKHGSGAFYSPELLE ALTLRFEAPDSRNRWDRPLFTLVGLEEPLPLAGIRSALFENRAPPHPQSTQSQPLASGSFLHQLDQVTSQ VLAGLMEAQKSAVPGDLLTLPGTTEHLRFTRPLTMAELSRLRRQFISYTKMHPNENLPQLANMFLQYLS QSLH
	TRTRPLEQKLISEEDLAANDILDYKDDDDKV
Tag:	C-Myc/DDK
Predicted MW:	38.4 kDa
Concentration:	>0.05 µg/µL as determined by microplate BCA method
Purity:	> 80% as determined by SDS-PAGE and Coomassie blue staining
Buffer:	25 mM Tris-HCl, 100 mM glycine, pH 7.3, 10% glycerol
Preparation:	Recombinant protein was captured through anti-DDK affinity column followed by conventional chromatography steps.
Note:	For testing in cell culture applications, please filter before use. Note that you may experience some loss of protein during the filtration process.
Storage:	Store at -80°C.
Stability:	Stable for 12 months from the date of receipt of the product under proper storage and handling conditions. Avoid repeated freeze-thaw cycles.
RefSeq:	<u>NP_612426</u>



[View online »](#)

Locus ID:	112970
UniProt ID:	Q96EK9
RefSeq Size:	1712
Cytogenetics:	1p32.3
RefSeq ORF:	1062
Synonyms:	SBBI81; TOT4
Protein Families:	Druggable Genome

Product images:



Coomassie blue staining of purified KTI12 protein (Cat# [TP304261]). The protein was produced from HEK293T cells transfected with KTI12 cDNA clone (Cat# [RC204261]) using MegaTran 2.0 (Cat# [TT210002]).