

Product datasheet for **TP304253M**

SEPTIN1 (NM_052838) Human Recombinant Protein

Product data:

Product Type: Recombinant Proteins

Description: Recombinant protein of human septin 1 (SEPT1), 100 µg

Species: Human

Expression Host: HEK293T

**Expression cDNA Clone
or AA Sequence:** >RC204253 protein sequence
Red=Cloning site **Green**=Tags(s)

MDKEYVGF AALPNQLHRKSVKKGDF TLMVAGESGLGKSTLINSFLTNLYEDRQVPEASARLTQTLAIE
RRGVEIEEGGVKVKLTLVDTPGFGDSVDCSDCWLPVVKFIEEQFEQYLRDESGLNRKNIQDSRVHCCLYF
ISPFGRGLRPLDVAFLRAVHEKVNIIPIVIGKADALMPQETQALKQKIRDQLKEEIIHIYQFPECDSDEDE
DFKRQDAEMKESIPFAVVGSCVVRDGGNRPVRRYRYSWGTVEVENPHHCDFLNRMLVQTHLQDLKEV
THDLLYEGYRARCLQSLARPGARDRASRSKLSRQSATEIPLPMLPLADTEKLIREKDEELRRMQEMLEKM
QAQMQQSQAQGEQSDAL

TRTRPLEQKLISEEDLAANDILDYKDDDDKV

Tag: C-Myc/DDK

Predicted MW: 41.8 kDa

Concentration: >0.05 µg/µL as determined by microplate BCA method

Purity: > 80% as determined by SDS-PAGE and Coomassie blue staining

Buffer: 25 mM Tris-HCl, 100 mM glycine, pH 7.3, 10% glycerol

Preparation: Recombinant protein was captured through anti-DDK affinity column followed by conventional chromatography steps.

Note: For testing in cell culture applications, please filter before use. Note that you may experience some loss of protein during the filtration process.

Storage: Store at -80°C.

Stability: Stable for 12 months from the date of receipt of the product under proper storage and handling conditions. Avoid repeated freeze-thaw cycles.

RefSeq: [NP_443070](#)

Locus ID: 1731



[View online »](#)

UniProt ID: [Q8WYJ6](#), [J3KNL2](#)

RefSeq Size: 1609

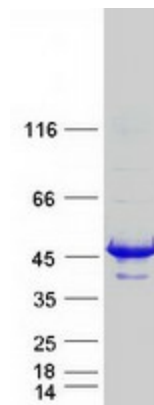
Cytogenetics: 16p11.2

RefSeq ORF: 1101

Synonyms: DIFF6; LARP; PNUTL3; SEP1; SEPT1

Summary: This gene is a member of the septin family of GTPases. Members of this family are required for cytokinesis and the maintenance of cellular morphology. This gene encodes a protein that can form homo- and heterooligomeric filaments, and may contribute to the formation of neurofibrillary tangles in Alzheimer's disease. Alternatively spliced transcript variants have been found but the full-length nature of these variants has not been determined. [provided by RefSeq, Dec 2012]

Product images:



Coomassie blue staining of purified SEPTIN1 protein (Cat# [TP304253]). The protein was produced from HEK293T cells transfected with SEPTIN1 cDNA clone (Cat# [RC204253]) using MegaTran 2.0 (Cat# [TT210002]).