

Product datasheet for TP304247

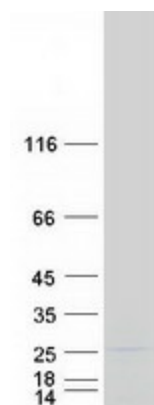
TMEM222 (NM_032125) Human Recombinant Protein

Product data:

Product Type:	Recombinant Proteins
Description:	Recombinant protein of human transmembrane protein 222 (TMEM222), 20 µg
Species:	Human
Expression Host:	HEK293T
Expression cDNA Clone or AA Sequence:	>RC204247 representing NM_032125 <div> <div>Red</div>=Cloning site <div>Green</div>=Tags(s) </div> <p>MAEVEAPTAETDMKQYQGSGGVAMDVERSRFPYCVWWTPIPVLTWFFPIIGHMGICTSTGVIRDFAGPY FVSEDNMAFGKPAKYWKLDPAQVYASGPNAWDTAVHDASEEYKHRMHNLCNDCHSHVALALNLMRY NNS TNWNMVTLCFFCLLYGKYVSVGAFVKTWLPFILLGILTSLVFNLR</p> <p><div>TR</div><div>TRPLEQKLISEEDLAANDILDYKDDDDKV</div></p>
Tag:	C-Myc/DDK
Predicted MW:	23 kDa
Concentration:	>0.05 µg/µL as determined by microplate BCA method
Purity:	> 80% as determined by SDS-PAGE and Coomassie blue staining
Buffer:	25 mM Tris-HCl, 100 mM glycine, pH 7.3, 10% glycerol
Preparation:	Recombinant protein was captured through anti-DDK affinity column followed by conventional chromatography steps.
Note:	For testing in cell culture applications, please filter before use. Note that you may experience some loss of protein during the filtration process.
Storage:	Store at -80°C.
Stability:	Stable for 12 months from the date of receipt of the product under proper storage and handling conditions. Avoid repeated freeze-thaw cycles.
RefSeq:	<u>NP_115501</u>
Locus ID:	84065
UniProt ID:	<u>Q9H0R3</u>


[View online »](#)

RefSeq Size:	1629
Cytogenetics:	1p36.11
RefSeq ORF:	564
Synonyms:	C1orf160
Protein Families:	Transmembrane

Product images:


Coomassie blue staining of purified TMEM222 protein (Cat# TP304247). The protein was produced from HEK293T cells transfected with TMEM222 cDNA clone (Cat# [RC204247]) using MegaTran 2.0 (Cat# [TT210002]).