

## Product datasheet for **TP304244L**

### SEPTIN6 (NM\_145802) Human Recombinant Protein

#### Product data:

**Product Type:** Recombinant Proteins

**Description:** Recombinant protein of human septin 6 (SEPT6), transcript variant V, 1 mg

**Species:** Human

**Expression Host:** HEK293T

**Expression cDNA Clone or AA Sequence:** >RC204244 protein sequence  
**Red**=Cloning site **Green**=Tags(s)

MAATDIARQVGEGERCTVPLAGHVGFDLSPDQLVNKSVSQGFCFNILCVGETGLGKSTLMDTLFNTKFEGE  
PATHTQPGVQLQSNTYDLQESNVRLKLTIVSTVGFQDQINKEDSYKPIVEFIDAQFEAYLQEELKIRRVL  
HTYHDSRIHVCLYFIAPTGHSLKSLDLVTMKKLDSKVNIIPIAKADAISKSELTKFKIKITSELVSNV  
QIYQFPTDDESVAEINGTMNAHLPFAVIGSTEELKIGNKMMRARQYPWGTQVQVENEAHCDFVKLREMLIR  
VNMEDLREQTHTRHYELYRCKLEEMGFKDTPDPSKPFSLQETYEAKRNEFLGELQKKEEEMRQMFVQRV  
KEKEAELKEAKELHEKFDRLKHLHQDEKKKLEDKKKSLDDEVNAFKQRKTA AELLQSQGSQAGGSQTLK  
RDKEKKNFF

**TRTRPLEQKLISEEDLAANDILDYKDDDDKV**

**Tag:** C-Myc/DDK

**Predicted MW:** 49 kDa

**Concentration:** >0.05 µg/µL as determined by microplate BCA method

**Purity:** > 80% as determined by SDS-PAGE and Coomassie blue staining

**Buffer:** 25 mM Tris-HCl, 100 mM glycine, pH 7.3, 10% glycerol

**Preparation:** Recombinant protein was captured through anti-DDK affinity column followed by conventional chromatography steps.

**Note:** For testing in cell culture applications, please filter before use. Note that you may experience some loss of protein during the filtration process.

**Storage:** Store at -80°C.

**Stability:** Stable for 12 months from the date of receipt of the product under proper storage and handling conditions. Avoid repeated freeze-thaw cycles.

**RefSeq:** [NP\\_665801](#)

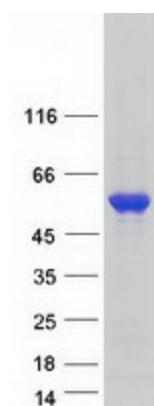


[View online »](#)

Locus ID:	23157
UniProt ID:	<a href="#">Q14141</a> , <a href="#">Q548C9</a>
RefSeq Size:	2564
Cytogenetics:	Xq24
RefSeq ORF:	1287
Synonyms:	SEP2; SEPT2; SEPT6

**Summary:** This gene is a member of the septin family of GTPases. Members of this family are required for cytokinesis. One version of pediatric acute myeloid leukemia is the result of a reciprocal translocation between chromosomes 11 and X, with the breakpoint associated with the genes encoding the mixed-lineage leukemia and septin 2 proteins. This gene encodes four transcript variants encoding three distinct isoforms. An additional transcript variant has been identified, but its biological validity has not been determined. [provided by RefSeq, Jul 2008]

### Product images:



Coomassie blue staining of purified SEPTIN6 protein (Cat# [TP304244]). The protein was produced from HEK293T cells transfected with SEPTIN6 cDNA clone (Cat# [RC204244]) using MegaTran 2.0 (Cat# [TT210002]).