

Product datasheet for **TP304237L**

DPP2 (DPP7) (NM_013379) Human Recombinant Protein

Product data:

Product Type: Recombinant Proteins

Description: Recombinant protein of human dipeptidyl-peptidase 7 (DPP7), 1 mg

Species: Human

Expression Host: HEK293T

**Expression cDNA Clone
or AA Sequence:** >RC204237 protein sequence
Red=Cloning site **Green**=Tags(s)

MGSAPWAPVLLLALGLRGLQAGARRAPDPGFQERFFQQRDLDFNFERFGNKTFFPQRFVSDRFWVRGEGP
IFFYTGNEGDVWAFANNSGFVAELAAERGALLVFAEHRYYGKSLPFGAQSTQRGHTELLTVEQALADFAE
LLRALRRDLGAQDAPAIAFGGSYGGMLSAYLRMKYPHLVAGALAASAPVLAVAGLGDNSNQFFRDVTADFE
GQSPKCTQGVREAFRQIKDLFLQGAYDTRWEFGTCQPLSDEKDLTQLFMFARNAFTVLAMMDYPYPTDF
LGPLPANPVKVGCDRLLSEAQRITGLRALAGLVYNASGSEHCYDIYRLYHSCADPTGCGTGPDARAWDYQ
ACTEINLTFASNNVTDMFPDLPFTDELQRQYCLDTWGWWRPDWLLTSFWGGDLRAASNIIFSNGNLDPW
AGGGIRRNLSASVIAVTIQGGAHHLDLRASHPEDPASVVEARKLEATIIGEWVKAARREQPALRGGPRL
SL

TRTRPLEQKLISEEDLAANDILDYKDDDDKV

Tag: C-Myc/DDK

Predicted MW: 52.2 kDa

Concentration: >0.05 µg/µL as determined by microplate BCA method

Purity: > 80% as determined by SDS-PAGE and Coomassie blue staining

Buffer: 25 mM Tris-HCl, 100 mM glycine, pH 7.3, 10% glycerol

Preparation: Recombinant protein was captured through anti-DDK affinity column followed by conventional chromatography steps.

Note: For testing in cell culture applications, please filter before use. Note that you may experience some loss of protein during the filtration process.

Storage: Store at -80°C.

Stability: Stable for 12 months from the date of receipt of the product under proper storage and handling conditions. Avoid repeated freeze-thaw cycles.



[View online >](#)

RefSeq: [NP_037511](#)

Locus ID: 29952

UniProt ID: [Q9UHL4](#)

RefSeq Size: 1633

Cytogenetics: 9q34.3

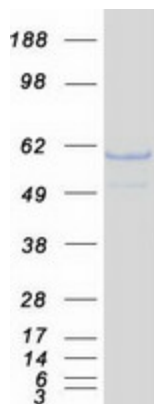
RefSeq ORF: 1476

Synonyms: DPP2; DPPII; QPP

Summary: The protein encoded by this gene is a post-proline cleaving aminopeptidase expressed in quiescent lymphocytes. The resting lymphocytes are maintained through suppression of apoptosis, a state which is disrupted by inhibition of this novel serine protease. The enzyme has strong sequence homology with prolylcarboxypeptidase and is active at both acidic and neutral pH. [provided by RefSeq, Jul 2008]

Protein Families: Protease

Product images:



Coomassie blue staining of purified DPP7 protein (Cat# [TP304237]). The protein was produced from HEK293T cells transfected with DPP7 cDNA clone (Cat# [RC204237]) using MegaTran 2.0 (Cat# [TT210002]).