

Product datasheet for **TP304232L**

BTN2A2 (NM_006995) Human Recombinant Protein

Product data:

Product Type:	Recombinant Proteins
Description:	Purified recombinant protein of Homo sapiens butyrophilin, subfamily 2, member A2 (BTN2A2), transcript variant 1, 1 mg
Species:	Human
Expression Host:	HEK293T
Expression cDNA Clone or AA Sequence:	>RC204232 protein sequence Red =Cloning site Green =Tags(s)

MEPAAALHFSLPASLLLLLLLLLLLLLCLALVSAQFTVWGPANPILAMVGENTTLRCHLSPEKNAEDMEVRW
FRSQFSPAVFVYKGGRETEEQMEEYRGRITFVSKDINRGVALVIHNVTAQENGIYRCYFQEGRSYDEA
ILRLVAVGLGSKPLIEIKAQEDGSIWLECSGGWYPEPLTVWRDPYGEVVPALKEVSIADADGLFMVTTA
VIIRDKYVRNVSCSVNNTLLGQEKETVIFIPESFMPSPASPWMVALAVILTASPWMVSMTVILAVFIIFMA
VSICCIKKLQREKKILSGEKKVEQEEKEIAQQLQEELRWRRTFLHAADVLPDPTAHPELFLSEDRRSVR
RGPYRQRPDPNPERFDSQPCVLGWESFASGKHYWEVEVENVMVWTVGVCRHSVERKGEVLLIPQNGFWTL
EMFGNQYRALSSPERILPLKESLCRVGVFLDYEAGDVSFYNNMRDRSHIYTCPRSAFTVPRPFRLGSDS
SPIFICPALTGASGVMVPEEGLKLHRVGTHTQSL

TRTRPLEQKLISEEDLAANDILDYKDDDDKV

Tag:	C-Myc/DDK
Predicted MW:	58.9 kDa
Concentration:	>0.05 µg/µL as determined by microplate BCA method
Purity:	> 80% as determined by SDS-PAGE and Coomassie blue staining
Buffer:	25 mM Tris-HCl, 100 mM glycine, pH 7.3, 10% glycerol
Preparation:	Recombinant protein was captured through anti-DDK affinity column followed by conventional chromatography steps.
Note:	For testing in cell culture applications, please filter before use. Note that you may experience some loss of protein during the filtration process.
Storage:	Store at -80°C.



[View online »](#)

Stability: Stable for 12 months from the date of receipt of the product under proper storage and handling conditions. Avoid repeated freeze-thaw cycles.

RefSeq: [NP_008926](#)

Locus ID: 10385

UniProt ID: [Q8WVV5](#), [A0A024R038](#)

RefSeq Size: 3602

Cytogenetics: 6p22.2

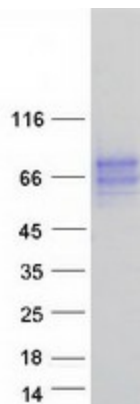
RefSeq ORF: 1569

Synonyms: BT2.2; BTF2; BTN2.2

Summary: Butyrophilin is the major protein associated with fat droplets in the milk. This gene is a member of the BTN2 subfamily of genes, which encode proteins belonging to the butyrophilin protein family. The gene is located in a cluster on chromosome 6, consisting of seven genes belonging to the expanding B7/butyrophilin-like group, a subset of the immunoglobulin gene superfamily. The encoded protein is a type I receptor glycoprotein involved in lipid, fatty-acid and sterol metabolism. Several alternatively spliced transcript variants encoding different isoforms have been found for this gene. [provided by RefSeq, Oct 2010]

Protein Families: Druggable Genome, Transmembrane

Product images:



Coomassie blue staining of purified BTN2A2 protein (Cat# [TP304232]). The protein was produced from HEK293T cells transfected with BTN2A2 cDNA clone (Cat# [RC204232]) using MegaTran 2.0 (Cat# [TT210002]).