

## Product datasheet for TP304227M

### HSPBAP1 (NM\_024610) Human Recombinant Protein

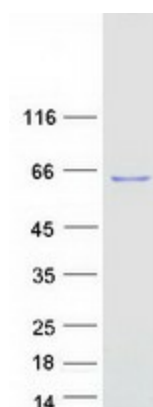
#### Product data:

Product Type:	Recombinant Proteins
Description:	Recombinant protein of human HSPB (heat shock 27kDa) associated protein 1 (HSPBAP1), 100 µg
Species:	Human
Expression Host:	HEK293T
Expression cDNA Clone or AA Sequence:	>RC204227 protein sequence <b>Red</b> =Cloning site <b>Green</b> =Tags(s)  MAAGSEATTPVIVAAGAGGEEGEHVKPFKPEKAKEIIMSLQQPAIFCNMVFDPARHWNAYLSQVLHGK QIRFRMGMSMSTVPQFETTCNYVEATLEEFITWNCDSISGPFDRDYDHSKFWAYADYKYFVSLFEDKT DLFQDVKWSDFGFGRNGQESTLWIGSLGAHTPCHLDISYGCNLVFQVQGRKRWHLPEDTPFLYPTRIP YEESVFSKINVNPDLKRFPQFRKAQRHAVTLSPGQVLFVPRHWWHYVESIDPVTVSINSWIELEEDHL ARVEEAITRMLVCALKTAENPQNTRAWLNPTVEETSHAVNCCYLNAAVSAFFDRCRTSEVVEIQALRTD GEHMKKEELNVCNHMEVGQTGSQNLTTGTDKPEAASPFGLPVAQRSEPPSERGGIFGSDGKDFVDK DGEHFGKLHCAKRQQIMSNSENAIEEQIASNTTTTPQTFTSTDDLLDCLVNPQVTRIVAQLLIQGRSL  <b>TRTRPLEQKLISEEDLAANDILDYKDDDDKV</b>
Tag:	C-Myc/DDK
Predicted MW:	55 kDa
Concentration:	>0.05 µg/µL as determined by microplate BCA method
Purity:	> 80% as determined by SDS-PAGE and Coomassie blue staining
Buffer:	25 mM Tris-HCl, 100 mM glycine, pH 7.3, 10% glycerol
Preparation:	Recombinant protein was captured through anti-DDK affinity column followed by conventional chromatography steps.
Note:	For testing in cell culture applications, please filter before use. Note that you may experience some loss of protein during the filtration process.
Storage:	Store at -80°C.


[View online »](#)

<b>Stability:</b>	Stable for 12 months from the date of receipt of the product under proper storage and handling conditions. Avoid repeated freeze-thaw cycles.
<b>RefSeq:</b>	<u>NP_078886</u>
<b>Locus ID:</b>	79663
<b>UniProt ID:</b>	<u>Q96EW2</u>
<b>RefSeq Size:</b>	1972
<b>Cytogenetics:</b>	3q21.1
<b>RefSeq ORF:</b>	1464
<b>Synonyms:</b>	PASS1
<b>Summary:</b>	This gene encodes a protein that binds to one of the small heat shock proteins, specifically hsp27. Hsp27 is involved with cell growth and differentiation. This encoded protein was found to be abnormally expressed in patients with intractable epilepsy, although how brain function is affected remains unknown. [provided by RefSeq, Sep 2011]

### Product images:



Coomassie blue staining of purified HSPBAP1 protein (Cat# [TP304227]). The protein was produced from HEK293T cells transfected with HSPBAP1 cDNA clone (Cat# [RC204227]) using MegaTran 2.0 (Cat# [TT210002]).