

## Product datasheet for TP304226L

### HAUS1 (NM\_138443) Human Recombinant Protein

#### Product data:

Product Type:	Recombinant Proteins
Description:	Recombinant protein of human coiled-coil domain containing 5 (spindle associated) (CCDC5), transcript variant 1, 1 mg
Species:	Human
Expression Host:	HEK293T
Expression cDNA Clone or AA Sequence:	>RC204226 protein sequence <b>Red</b> =Cloning site <b>Green</b> =Tags(s)

MEPQEERETQVAAWLKKIFGDHPIQYEVNPRTEILHHLSENRNRVDRDYYLVIEDLKQKASEYESEAK  
YLQDLLMESVNFSPANLSSTGSRYLNALVDSAVALETKDTSLASFIPAVNDLTSDFRTKSKSEEIKIEL  
EKLEKNLTATLVLEKCLQEDVKAELHLSTERAKVDNRRQNMDFLKAKSEEFRFGIKAAEEQLSARGMDA  
SLSHQSLValseklarlkqqtiplkkklesyldlmpnpslaqvkieakreldsieaeltrrvdmmel

**TRTRPLEQKLISEEDLAANDILDYKDDDDKV**

Tag:	C-Myc/DDK
Predicted MW:	31.7 kDa
Concentration:	>0.05 µg/µL as determined by microplate BCA method
Purity:	> 80% as determined by SDS-PAGE and Coomassie blue staining
Buffer:	25 mM Tris-HCl, 100 mM glycine, pH 7.3, 10% glycerol
Preparation:	Recombinant protein was captured through anti-DDK affinity column followed by conventional chromatography steps.
Note:	For testing in cell culture applications, please filter before use. Note that you may experience some loss of protein during the filtration process.
Storage:	Store at -80°C.
Stability:	Stable for 12 months from the date of receipt of the product under proper storage and handling conditions. Avoid repeated freeze-thaw cycles.
RefSeq:	<a href="#">NP_612452</a>
Locus ID:	115106



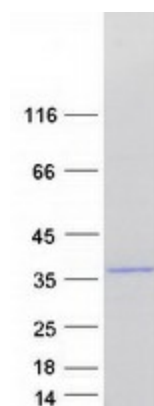
[View online »](#)

UniProt ID: [Q96CS2](#)  
RefSeq Size: 1145  
Cytogenetics: 18q21.1  
RefSeq ORF: 834  
Synonyms: CCDC5; HEI-C; HEIC; HsT1461

**Summary:** HAUS1 is 1 of 8 subunits of the 390-kD human augmin complex, or HAUS complex. The augmin complex was first identified in *Drosophila*, and its name comes from the Latin verb 'augmentare,' meaning 'to increase.' The augmin complex is a microtubule-binding complex involved in microtubule generation within the mitotic spindle and is vital to mitotic spindle assembly (Goshima et al., 2008 [PubMed 18443220]; Uehara et al., 2009 [PubMed 19369198]). [supplied by OMIM, Jun 2010]

**Protein Families:** Stem cell - Pluripotency

### Product images:



Coomassie blue staining of purified HAUS1 protein (Cat# [TP304226]). The protein was produced from HEK293T cells transfected with HAUS1 cDNA clone (Cat# [RC204226]) using MegaTran 2.0 (Cat# [TT210002]).