

Product datasheet for **TP304225M**

WDFY2 (NM_052950) Human Recombinant Protein

Product data:

Product Type: Recombinant Proteins

Description: Recombinant protein of human WD repeat and FYVE domain containing 2 (WDFY2), 100 µg

Species: Human

Expression Host: HEK293T

Expression cDNA Clone >RC204225 protein sequence

or AA Sequence: **Red**=Cloning site **Green**=Tags(s)

MAAEIQPKPLTRKPILLQRMEGSQEVDNMAVIVPKEEGVISVSEDRTVRVWLKRDSGQYWPSVYHAMPSP
CSCMSFNPETRRLSIGLDNGTISEFILSEDYNKMTVPVKNYQAHQSRVTMILFVLELEWVLSTGQDKQFAW
HCSESGQRLGGYRTSAVASGLQFDVETRHRVFIGDHSQVTLKLEQENCTLVTTFRGHTGGVTALCWDPV
QRVLFSGSSDHSVIMWDIGGRKGTAIELQGHNDRVQALSQAQHTRQLISCGGDGGIVVWNMDVERQETPE
WLDSDSCQKCDQPPFFWNFKQMWDSSKIGLRQHHCRCGKAVCGKCSSKRSSIPLMGFEFEVRCDSCH
ITDEERAPTATFHDSKHNVVHFDATRGLWLLTSGTDKVIKLVDMTPVWS

TRTRPLEQKLISEEDLAANDILDYKDDDDKV

Tag: C-Myc/DDK

Predicted MW: 45 kDa

Concentration: >0.05 µg/µL as determined by microplate BCA method

Purity: > 80% as determined by SDS-PAGE and Coomassie blue staining

Buffer: 25 mM Tris-HCl, 100 mM glycine, pH 7.3, 10% glycerol

Preparation: Recombinant protein was captured through anti-DDK affinity column followed by conventional chromatography steps.

Note: For testing in cell culture applications, please filter before use. Note that you may experience some loss of protein during the filtration process.

Storage: Store at -80°C.

Stability: Stable for 12 months from the date of receipt of the product under proper storage and handling conditions. Avoid repeated freeze-thaw cycles.

RefSeq: [NP_443182](#)

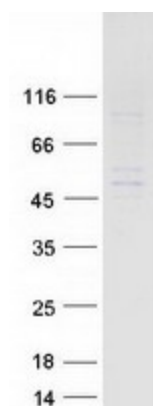
Locus ID: 115825



[View online »](#)

UniProt ID:	Q96P53
RefSeq Size:	3809
Cytogenetics:	13q14.3
RefSeq ORF:	1200
Synonyms:	PROF; WDF2; ZFYVE22
Summary:	This gene encodes a protein that contains two WD domains and an FYVE zinc finger region. The function of this gene is unknown. An alternatively spliced transcript variant of this gene may exist. [provided by RefSeq, Jul 2008]

Product images:



Coomassie blue staining of purified WDFY2 protein (Cat# [TP304225]). The protein was produced from HEK293T cells transfected with WDFY2 cDNA clone (Cat# [RC204225]) using MegaTran 2.0 (Cat# [TT210002]).