

Product datasheet for **TP304225L**

WDFY2 (NM_052950) Human Recombinant Protein

Product data:

Product Type:	Recombinant Proteins
Description:	Recombinant protein of human WD repeat and FYVE domain containing 2 (WDFY2), 1 mg
Species:	Human
Expression Host:	HEK293T
Expression cDNA Clone or AA Sequence:	>RC204225 protein sequence Red =Cloning site Green =Tags(s)

MAAEIQPKPLTRKPIILLQRMESQEVNMAVIVPKEEGVISVSEDRTVRVWLKRDSGQYWPSVYHAMPSP
CSCMSFNPETRRLSIGLDNGTISEFILSEDYNKMTVPVKNYQAHQSRVTMILFVLELEWVLSTGQDKQFAW
HCSESGQRLGGYRTSAVASGLQFDVETRHRVFIGDHSQVTLKLEQENCTLVTTFRGHTGGVTALCWDPV
QRVLFSGSSDHSVIMWDIGGRKGTAIELQGHNDRVQALSQAQHTRQLISCGGDGGIVVWNMDVERQETPE
WLDSQKCDQPPFFWNFKQMWDSSKIGLRQHHCRCGKAVCGKCSSKRSSIPLMGFEFEVRCDSCHEA
ITDEERAPTATFHDSKHNIHVHFDATRGLWLLTSGTDKVIKLWDMTPVVS

TRTRPLEQKLISEEDLAANDILDYKDDDDKV

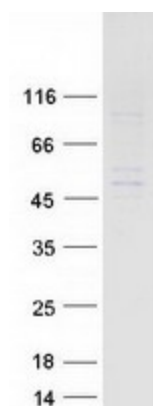
Tag:	C-Myc/DDK
Predicted MW:	45 kDa
Concentration:	>0.05 µg/µL as determined by microplate BCA method
Purity:	> 80% as determined by SDS-PAGE and Coomassie blue staining
Buffer:	25 mM Tris-HCl, 100 mM glycine, pH 7.3, 10% glycerol
Preparation:	Recombinant protein was captured through anti-DDK affinity column followed by conventional chromatography steps.
Note:	For testing in cell culture applications, please filter before use. Note that you may experience some loss of protein during the filtration process.
Storage:	Store at -80°C.
Stability:	Stable for 12 months from the date of receipt of the product under proper storage and handling conditions. Avoid repeated freeze-thaw cycles.
RefSeq:	NP_443182
Locus ID:	115825



[View online »](#)

UniProt ID:	Q96P53
RefSeq Size:	3809
Cytogenetics:	13q14.3
RefSeq ORF:	1200
Synonyms:	PROF; WDF2; ZFYVE22
Summary:	This gene encodes a protein that contains two WD domains and an FYVE zinc finger region. The function of this gene is unknown. An alternatively spliced transcript variant of this gene may exist. [provided by RefSeq, Jul 2008]

Product images:



Coomassie blue staining of purified WDFY2 protein (Cat# [TP304225]). The protein was produced from HEK293T cells transfected with WDFY2 cDNA clone (Cat# [RC204225]) using MegaTran 2.0 (Cat# [TT210002]).