

Product datasheet for **TP304225**

WDFY2 (NM_052950) Human Recombinant Protein

Product data:

Product Type: Recombinant Proteins
Description: Recombinant protein of human WD repeat and FYVE domain containing 2 (WDFY2), 20 µg
Species: Human
Expression Host: HEK293T
Expression cDNA Clone or AA Sequence: >RC204225 protein sequence
Red=Cloning site **Green**=Tags(s)

MAAEIQPKPLTRKPILLQRMEGSQEVDNMAVIVPKEEGVISVSEDRTVRVWLKRDSGQYWPSVYHAMPSP
CSCMSFNPETRRLSIGLDNGTISEFILSEDYNKMTVPVKNYQAHQSRVTMILFVLELEWVLSTGQDKQFAW
HCSESGQRLGGYRTSAVASGLQFDVETRHRVFIGDHSQVTLKLEQENCTLVTTFRGHTGGVTALCWDPV
QRVLFSGSSDHSVIMWDIGGRKGTAIELQGHNDRVQALSQAQHTRQLISCGGDGGIVVWNMDVERQETPE
WLDSDSCQKCDQPPFFWNFKQMWDSSKIGLRQHHCRCGKAVCGKCSSKRSSIPLMGFEFEVRCVDCSCHEA
ITDEERAPTATFHDSKHNVVHFDATRGLWLLTSGTDKVIKLDWDMTPVVS

TRTRPLEQKLISEEDLAANDILDYKDDDDKV

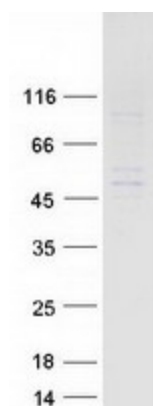
Tag: C-Myc/DDK
Predicted MW: 45 kDa
Concentration: >0.05 µg/µL as determined by microplate BCA method
Purity: > 80% as determined by SDS-PAGE and Coomassie blue staining
Buffer: 25 mM Tris-HCl, 100 mM glycine, pH 7.3, 10% glycerol
Preparation: Recombinant protein was captured through anti-DDK affinity column followed by conventional chromatography steps.
Note: For testing in cell culture applications, please filter before use. Note that you may experience some loss of protein during the filtration process.
Storage: Store at -80°C.
Stability: Stable for 12 months from the date of receipt of the product under proper storage and handling conditions. Avoid repeated freeze-thaw cycles.
RefSeq: [NP_443182](#)
Locus ID: 115825



[View online »](#)

UniProt ID:	Q96P53
RefSeq Size:	3809
Cytogenetics:	13q14.3
RefSeq ORF:	1200
Synonyms:	PROF; WDF2; ZFYVE22
Summary:	This gene encodes a protein that contains two WD domains and an FYVE zinc finger region. The function of this gene is unknown. An alternatively spliced transcript variant of this gene may exist. [provided by RefSeq, Jul 2008]

Product images:



Coomassie blue staining of purified WDFY2 protein (Cat# TP304225). The protein was produced from HEK293T cells transfected with WDFY2 cDNA clone (Cat# [RC204225]) using MegaTran 2.0 (Cat# [TT210002]).