

Product datasheet for **TP304204L**

SIL1 (NM_001037633) Human Recombinant Protein

Product data:

Product Type:	Recombinant Proteins
Description:	Recombinant protein of human SIL1 homolog, endoplasmic reticulum chaperone (S. cerevisiae) (SIL1), transcript variant 1, 1 mg
Species:	Human
Expression Host:	HEK293T
Expression cDNA Clone or AA Sequence:	>RC204204 protein sequence Red =Cloning site Green =Tags(s)

MAPQSLPSSRMAPLGMMLLGLLMAACFTFCLSHQNLKEFALTNPEKSSTKETERKETKAEHEELDAEVLEVF
HPTHEWQALQPGQAVPAGSHVRLNLQTGEREAKLQYEDKFRNNLKGKRLDINTNTYTSQDLKSALAKFKE
GAEMESSKEDKARQAEVKRLFRPIEELKKDFDELNVVIETDMQIMVRLINKFNSSSSSLEEKIAALFDLE
YYVHQMDNAQDLLSFGGLQVINGLNSTEPLVKEYAAFVLGAAFSSNPKVQVEAIEGGALQKLLVILATE
QPLTAKKKVLFALCSLLRHFPYAQRQFLKLGGLQVRLTLVQEKGTEVLAVRVVTLTYDLVTEKMFEEEEA
ELTQEMSPEKLQYRQVHLLPGLWEQGWCEITAHLLALPEHDAREKVLQTLGVLLTTCRDRYRQDPQLGR
TLASLQAEYQVLASLELQDGEDEGYFQELLGSVNSLLKELR

TRTRPLEQKLISEEDLAANDILDYKDDDDKV

Tag:	C-Myc/DDK
Predicted MW:	48.8 kDa
Concentration:	>0.05 µg/µL as determined by microplate BCA method
Purity:	> 80% as determined by SDS-PAGE and Coomassie blue staining
Buffer:	25 mM Tris-HCl, 100 mM glycine, pH 7.3, 10% glycerol
Preparation:	Recombinant protein was captured through anti-DDK affinity column followed by conventional chromatography steps.
Note:	For testing in cell culture applications, please filter before use. Note that you may experience some loss of protein during the filtration process.
Storage:	Store at -80°C.
Stability:	Stable for 12 months from the date of receipt of the product under proper storage and handling conditions. Avoid repeated freeze-thaw cycles.



[View online >](#)

RefSeq: [NP_001032722](#)

Locus ID: 64374

UniProt ID: [Q9H173](#), [A0A0S2Z6B4](#)

RefSeq Size: 1996

Cytogenetics: 5q31.2

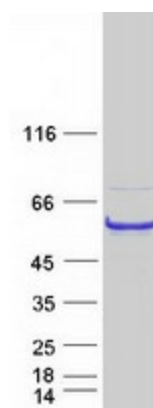
RefSeq ORF: 1383

Synonyms: BAP; MSS; ULG5

Summary: This gene encodes a resident endoplasmic reticulum (ER), N-linked glycoprotein with an N-terminal ER targeting sequence, 2 putative N-glycosylation sites, and a C-terminal ER retention signal. This protein functions as a nucleotide exchange factor for another unfolded protein response protein. Mutations in this gene have been associated with Marinesco-Sjogren syndrome. Alternate transcriptional splice variants have been characterized. [provided by RefSeq, Jul 2008]

Protein Families: Protease, Secreted Protein, Transmembrane

Product images:



Coomassie blue staining of purified SIL1 protein (Cat# [TP304204]). The protein was produced from HEK293T cells transfected with SIL1 cDNA clone (Cat# [RC204204]) using MegaTran 2.0 (Cat# [TT210002]).