

Product datasheet for **TP304199L**

Claudin 2 (CLDN2) (NM_020384) Human Recombinant Protein

Product data:

Product Type: Recombinant Proteins

Description: Recombinant protein of human claudin 2 (CLDN2), 1 mg

Species: Human

Expression Host: HEK293T

**Expression cDNA Clone
or AA Sequence:** >RC204199 protein sequence
Red=Cloning site **Green**=Tags(s)

MASLGLQLVGILGLLGLLGTLVAMLLPSWKTSSYVGASIVTAVGFSKGLWMECATHSTGITQCDIYSTL
LGLPADIQAAQAMMVTSSAIISSLACIIISVVGMRCTVFCQESRAKDRVAVAGGVFFILGLLGFIPVAWNL
HGILRDFYSPLVPDSMKFEIGEALYLGIISSLSLIAGIILCFSCSSQRNRSNYYDAYQAQPLATRSSPR
PGQPPKVKSEFNYSYSLTGYV

TRTRPLEQKLISEEDLAANDILDYKDDDDKV

Tag: C-Myc/DDK

Predicted MW: 24.4 kDa

Concentration: >0.05 µg/µL as determined by microplate BCA method

Purity: > 80% as determined by SDS-PAGE and Coomassie blue staining

Buffer: 25 mM Tris-HCl, 100 mM glycine, pH 7.3, 10% glycerol

Preparation: Recombinant protein was captured through anti-DDK affinity column followed by conventional chromatography steps.

Note: For testing in cell culture applications, please filter before use. Note that you may experience some loss of protein during the filtration process.

Storage: Store at -80°C.

Stability: Stable for 12 months from the date of receipt of the product under proper storage and handling conditions. Avoid repeated freeze-thaw cycles.

RefSeq: [NP_065117](#)

Locus ID: 9075

UniProt ID: [P57739](#)



[View online »](#)

RefSeq Size: 2998

Cytogenetics: Xq22.3

RefSeq ORF: 690

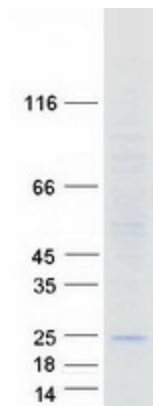
Synonyms: OAZON

Summary: This gene product belongs to the claudin protein family whose members have been identified as major integral membrane proteins localized exclusively at tight junctions. Claudins are expressed in an organ-specific manner and regulate tissue-specific physiologic properties of tight junctions. This protein is expressed in the intestine. Alternatively spliced transcript variants with different 5' untranslated region have been found for this gene.[provided by RefSeq, Jan 2010]

Protein Families: Transmembrane

Protein Pathways: Cell adhesion molecules (CAMs), Leukocyte transendothelial migration, Tight junction

Product images:



Coomassie blue staining of purified CLDN2 protein (Cat# [TP304199]). The protein was produced from HEK293T cells transfected with CLDN2 cDNA clone (Cat# [RC204199]) using MegaTran 2.0 (Cat# [TT210002]).