

## Product datasheet for TP304199

### Claudin 2 (CLDN2) (NM\_020384) Human Recombinant Protein

#### Product data:

Product Type:	Recombinant Proteins
Description:	Recombinant protein of human claudin 2 (CLDN2), 20 µg
Species:	Human
Expression Host:	HEK293T
Expression cDNA Clone or AA Sequence:	>RC204199 protein sequence Red=Cloning site Green=Tags(s)

MASLGLQLVGYILGLLGLLGTLVAMLLPSWKTSSVVGASIVTAVGFSKGLWMECATHSTGITQCDIYSTL  
LGLPADIQAAQAMMVTSSAISLACIISVGMRICTVFCQESRAKDRVAVAGGVFFILGLLGFIPVAWNL  
HGILRDFYSPLVPDSMKFEIGEALYLGIISSLFSLIAGIILCFSCSSQRNRSNYYDAYQAQPLATRSSPR  
PGQPPKVKSEFNYSYSLTGYV

TRTRPLEQKLISEEDLAANDILDYKDDDDKV

Tag:	C-Myc/DDK
Predicted MW:	24.4 kDa
Concentration:	>0.05 µg/µL as determined by microplate BCA method
Purity:	> 80% as determined by SDS-PAGE and Coomassie blue staining
Buffer:	25 mM Tris-HCl, 100 mM glycine, pH 7.3, 10% glycerol
Preparation:	Recombinant protein was captured through anti-DDK affinity column followed by conventional chromatography steps.
Note:	For testing in cell culture applications, please filter before use. Note that you may experience some loss of protein during the filtration process.
Storage:	Store at -80°C.
Stability:	Stable for 12 months from the date of receipt of the product under proper storage and handling conditions. Avoid repeated freeze-thaw cycles.
RefSeq:	<u><a href="#">NP_065117</a></u>
Locus ID:	9075
UniProt ID:	<u><a href="#">P57739</a></u>



[View online »](#)

RefSeq Size: 2998

Cytogenetics: Xq22.3

RefSeq ORF: 690

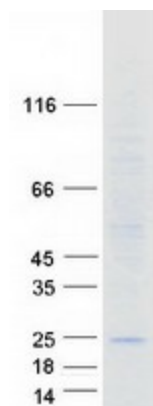
Synonyms: OAZON

**Summary:** This gene product belongs to the claudin protein family whose members have been identified as major integral membrane proteins localized exclusively at tight junctions. Claudins are expressed in an organ-specific manner and regulate tissue-specific physiologic properties of tight junctions. This protein is expressed in the intestine. Alternatively spliced transcript variants with different 5' untranslated region have been found for this gene.[provided by RefSeq, Jan 2010]

**Protein Families:** Transmembrane

**Protein Pathways:** Cell adhesion molecules (CAMs), Leukocyte transendothelial migration, Tight junction

### Product images:



Coomassie blue staining of purified CLDN2 protein (Cat# TP304199). The protein was produced from HEK293T cells transfected with CLDN2 cDNA clone (Cat# [RC204199]) using MegaTran 2.0 (Cat# [TT210002]).