

Product datasheet for **TP304186M**

PEDF (SERPINF1) (NM_002615) Human Recombinant Protein

Product data:

Product Type:	Recombinant Proteins
Description:	Recombinant protein of human serpin peptidase inhibitor, clade F (alpha-2 antiplasmin, pigment epithelium derived factor), member 1 (SERPINF1), 100 µg
Species:	Human
Expression Host:	HEK293T
Expression cDNA Clone or AA Sequence:	>RC204186 protein sequence Red =Cloning site Green =Tags(s)
	<p>MQALVLLLCIGALLGHSSCQNPASPPEEGSPDPDSTGALVEEEDPFFKVPVNKLAAAVSNFGYDLYRVRS SMSPTTNVLLSPLSVATALSALS LGAEQRTESIIHRALYYDLISSPDIHGTYKELLDVTARQKNLKSAS RIVFEKRLRIKSSFVAPLEKSYGTRPRVLTGNPRLDLQEINNWWQAQMKGKLARSTKEIPDEISILLGV AHFKGQWVTKFDSRKTSLEDFYLDEERTVRVPMMSDPKAVLRYGLDSDLCKIAQLPLTGSMISIFLPL KVTQNLTLIEESLTSEFIHDIDRELKTVQAVLTVPKLKLSYEGEVTKSLQEMKLQSLFDSPPDFSKITGKP IKLTQVEHRAGFEWNEDGAGTTPSPGLQPAHLTFPLDYHLNQPFIVLRD TDTGALLFIGKILDPRGP</p> <p>TRTRPLEQKLISEEDLAANDILDYKDDDDKV</p>
Tag:	C-Myc/DDK
Predicted MW:	46.1 kDa
Concentration:	>0.05 µg/µL as determined by microplate BCA method
Purity:	> 80% as determined by SDS-PAGE and Coomassie blue staining
Buffer:	25 mM Tris-HCl, 100 mM glycine, pH 7.3, 10% glycerol
Preparation:	Recombinant protein was captured through anti-DDK affinity column followed by conventional chromatography steps.
Note:	For testing in cell culture applications, please filter before use. Note that you may experience some loss of protein during the filtration process.
Storage:	Store at -80°C.
Stability:	Stable for 12 months from the date of receipt of the product under proper storage and handling conditions. Avoid repeated freeze-thaw cycles.
RefSeq:	<u>NP_002606</u>



[View online »](#)

Locus ID: 5176

UniProt ID: [P36955](#), [A0A140VKF3](#)

RefSeq Size: 1552

Cytogenetics: 17p13.3

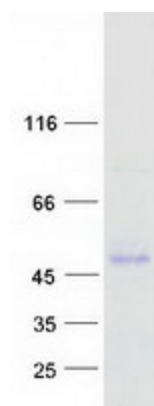
RefSeq ORF: 1254

Synonyms: EPC-1; OI6; OI12; PEDF; PIG35

Summary: This gene encodes a member of the serpin family that does not display the serine protease inhibitory activity shown by many of the other serpin proteins. The encoded protein is secreted and strongly inhibits angiogenesis. In addition, this protein is a neurotrophic factor involved in neuronal differentiation in retinoblastoma cells. Mutations in this gene were found in individuals with osteogenesis imperfecta, type VI. [provided by RefSeq, Aug 2016]

Protein Families: Druggable Genome, Secreted Protein

Product images:



Coomassie blue staining of purified SERPINF1 protein (Cat# [TP304186]). The protein was produced from HEK293T cells transfected with SERPINF1 cDNA clone (Cat# [RC204186]) using MegaTran 2.0 (Cat# [TT210002]).