

Product datasheet for TP304185

PHKA2 (NM_000292) Human Recombinant Protein

Product data:

Product Type: Recombinant Proteins
Description: Recombinant protein of human phosphorylase kinase, alpha 2 (liver) (PHKA2), 20 µg
Species: Human
Expression Host: HEK293T
Expression cDNA Clone or AA Sequence: >RC204185 protein sequence
Red=Cloning site Green=Tags(s)

MRSRSNSGVRLDGYARLVQQTILCYQNPVTGLLSASHEQKDAWVRDNIYSILAVWGLGMAYRKNADRDE
D
KAKAYELEQNVVKLMRGLLQCMMRQVAKVEKFKHTQSTKDSLHAKYNTATCGTVGDDQWGHLQVDA
TSL
FLLFLAQMTASGLRIIFTLDEVAFIQNLVFIYEAAYKVADYGMWERGDKTNQGIPELNASSVGMAKAALE
AIDELDLFGAHGGRKSVIHVLPDEVEHCQSILFSMLPRASTSKEIDAGLLSIISFPFAVEDVNLVNVTK
NEIISKLGGRYGCCRFLRDGYKTPREDPNRLHYDPAELKLFENIECEWPVFWTYFIIDGVFSGDAVQVQE
YREALGILIRGKNGIRLVPPELYAVPPNKVDEEYKNPHTVDRVPMGKVPHLWQSLYLSSLLAEGFLAA
GEIDPLNRRFSTSVKPDVWVQVTVLAENNHKDLLRKHGNNVQSIADIHPIQVQPGRILSHIYAKLGRNK
NMNLSGRPYRHIGVLGTSKLYVIRNQIFFTFPQFTDEHHFYALDNEMIVEMLRIELAYLCTCWRMTGRP
TLTFPISRTMLTNDGSDIHS AVLSTIRKLEDGYFGGARVKLGNLSEFLTTSFYTYLTFDPDCDEKLFDN
ASEGTFSPDSDLVGYLEDTCNQESQDELHDYINHLLQSTSLRSYLPPLCKNTEDRHVFSIAHSTRDIL
SVMAKAGLEVFPVMTLPTKVLSAHRKSLNLVDSPQPLLEKVPESDFQWPRDDHSDVDCEKLVEQLKD
C
SNLQDQADILYILYVIKGPSWDTNLSGQHGVTVQNLLGELYGKAGLNQEWGLIRYISGLLRKKVEVLAEA
CTDLLSHQKQLTVGLPPEPREKIISAPLPPEELTKLIYEASGQDISIAVLTQEIVVYLAMYVRAQPSLFV
EMLRLRIGLIIQVMATELARSLNCSGEEASESLMNLSPFDMKNLLHHILSGKEFGVERSVRPIHSSTSSP
TISIHEVGHTGVTKTERSGINRLRSEM KQMTRRFSADEQFFSVGQAASSAHSSKSARSSTPSSPTGTSS
SDSGGHHIGWGERQGWLRRRRLDGAINRVPVGFYQRVWKILQKCHGLSIDGYVLPSSTTREMPHEIKF
AVHVESVLNRVPQPEYRQLLVEAIMVLTLLSDTEMTSIGGIIHVDQIVQMASQLFLQDQV SIGAMDTLEK
DQATGICHFFYDSAPSGAYGTMTYLTRAVASYLQELLPNSGCQMQ

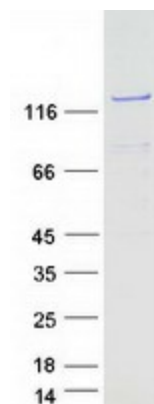
TRTRPLEQKLISEEDLAANDILDYKDDDDKV

Tag: C-Myc/DDK
Predicted MW: 138.2 kDa



[View online >](#)

Concentration:	>0.05 µg/µL as determined by microplate BCA method
Purity:	> 80% as determined by SDS-PAGE and Coomassie blue staining
Buffer:	25 mM Tris-HCl, 100 mM glycine, pH 7.3, 10% glycerol
Preparation:	Recombinant protein was captured through anti-DDK affinity column followed by conventional chromatography steps.
Note:	For testing in cell culture applications, please filter before use. Note that you may experience some loss of protein during the filtration process.
Storage:	Store at -80°C.
Stability:	Stable for 12 months from the date of receipt of the product under proper storage and handling conditions. Avoid repeated freeze-thaw cycles.
RefSeq:	NP_000283
Locus ID:	5256
UniProt ID:	P46019
RefSeq Size:	5325
Cytogenetics:	Xp22.13
RefSeq ORF:	3705
Synonyms:	GSD9A; PHK; PYK; PYKL; XLG; XLG2
Summary:	Phosphorylase kinase is a polymer of 16 subunits, four each of alpha, beta, gamma and delta. The alpha subunit includes the skeletal muscle and hepatic isoforms, and the hepatic isoform is encoded by this gene. The beta subunit is the same in both the muscle and hepatic isoforms, and encoded by one gene. The gamma subunit also includes the skeletal muscle and hepatic isoforms, which are encoded by two different genes. The delta subunit is a calmodulin and can be encoded by three different genes. The gamma subunits contain the active site of the enzyme, whereas the alpha and beta subunits have regulatory functions controlled by phosphorylation. The delta subunit mediates the dependence of the enzyme on calcium concentration. Mutations in this gene cause glycogen storage disease type 9A, also known as X-linked liver glycogenosis. Alternatively spliced transcript variants have been reported, but the full-length nature of these variants has not been determined.[provided by RefSeq, Feb 2010]
Protein Families:	Druggable Genome
Protein Pathways:	Calcium signaling pathway, Insulin signaling pathway

Product images:

Coomassie blue staining of purified PHKA2 protein (Cat# TP304185). The protein was produced from HEK293T cells transfected with PHKA2 cDNA clone (Cat# [RC204185]) using MegaTran 2.0 (Cat# [TT210002]).