

## Product datasheet for **TP304175L**

### Hephaestin (HEPH) (NM\_014799) Human Recombinant Protein

#### Product data:

Product Type:	Recombinant Proteins
Description:	Recombinant protein of human hephaestin (HEPH), transcript variant 2, 1 mg
Species:	Human
Expression Host:	HEK293T
Expression cDNA Clone or AA Sequence:	>RC204175 protein sequence <b>Red</b> =Cloning site <b>Green</b> =Tags(s)

MESGHLLWALLFMQSLWPQLTDGATRVYYLGIRDVQWNYAPKGRNVITNQPLDSDIVASSFLKSDKNRIG  
 GTYKTIYKEYKDDSYTDEVAQPAWLGFLGPVLAQEVGDVILHLKNFATRPYTIHPHGVFYEKDSSEGL  
 YPDGSSGPKADDSVPPGGSHIYNWTIPEGHAPTDADPACLTWIYHSHVDAPRDIATGLIGPLITCKRGA  
 LDGNSPPQRQDVDHDFLLFSVDENLSWHLNENIATYCDPASVDKEDETFQESNRMHAINGFVFGNLP  
 ELNMQAQKRVAVHFLFGMGNEIDVHTAFFHGQMLTTRGHHTDVANIFPATFVTAEMVPWEPGTWLISCQVN  
 SHFRDGMQALYKVKSCSMAPPVDLLTGKVRQYFIEAHEIQWDYGPMGHGSGTKNLREPGSISDKFFQKS  
 SSRIGGTYWKVRYEAFQDETFQEKMHLEEDRHLGILGPVIRAQEVGDTIQVVFYNRASQPFMMPHGVSFYE  
 KDYEGTVYNDGSSYPGLVAKPFEKVTYRWTVPPHAGPTAQDPACLTWMYFSAADPIRDTNSGLVGPLLVC  
 RAGALGADGKQKGVDKVDFLLFTVLDENKSWYSNANQAAAMLDFRLLSEIDIEGFQDSNRMHAINGFLFSN  
 LPRLDMCKGDTVAVHLLGLGTETDVHGVMFQGNTVQLQGMKGAAMLPHTFVMAIMQPDNLGTFEICYCQ  
 AGSHREAGMRAIYNVSQCPGHQATPRQRYQAARIYYIMAEVEWDYCPDRSWEREWHNQSEKDSYGYIFL  
 SNKDGLLGSRYKKAFFREYTDGTFRIPRPTGPEEHLGILGPLIKGEVGDILTVVFKNNASRPYSVHAHG  
 VLESTTVWPLAAEPGEVVTYQWNIPERSGPGPNDSACVSWIYSAVDPIKDMYSGLVGPLAICQKGIPEP  
 HGGRSMDREFALLFLIFDENKSWYLEENVATHGSQDPGSINLQDETFLESNKMHAINGKLYANLRGLTM  
 YQGERVAWYMLAMGQDVDLHTIHFHAESFLYRNGENYRADVDLFPGTFFEVVEMVASNPGTWLMHCHVTD  
 HVHAGMETLFTVFSRTEHLSPLTVITKETEKAVPPRDIEEGNVKMLGMQIPIKNVEMLASVLVAISVTL  
 LVLALGGVVWYQHRQRKLRNRRSILDDSFKLLSFQK

**TRTRPLEQKLISEEDLAANDILDYKDDDDKV**

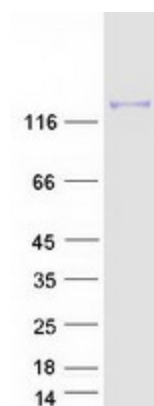
Tag:	C-Myc/DDK
Predicted MW:	100.4 kDa
Concentration:	>0.05 µg/µL as determined by microplate BCA method
Purity:	> 80% as determined by SDS-PAGE and Coomassie blue staining
Buffer:	25 mM Tris-HCl, 100 mM glycine, pH 7.3, 10% glycerol



[View online »](#)

<b>Preparation:</b>	Recombinant protein was captured through anti-DDK affinity column followed by conventional chromatography steps.
<b>Note:</b>	For testing in cell culture applications, please filter before use. Note that you may experience some loss of protein during the filtration process.
<b>Storage:</b>	Store at -80°C.
<b>Stability:</b>	Stable for 12 months from the date of receipt of the product under proper storage and handling conditions. Avoid repeated freeze-thaw cycles.
<b>RefSeq:</b>	<a href="#">NP_055614</a>
<b>Locus ID:</b>	9843
<b>UniProt ID:</b>	<a href="#">Q9BQS7</a>
<b>RefSeq Size:</b>	4284
<b>Cytogenetics:</b>	Xq12
<b>RefSeq ORF:</b>	3477
<b>Synonyms:</b>	CPL
<b>Summary:</b>	This gene encodes a member of the multicopper oxidase protein family. The encoded protein is involved in the transport of dietary iron from epithelial cells of the intestinal lumen into the circulatory system, and may be involved in copper transport and homeostasis. In mouse, defects in this gene can lead to severe microcytic anemia. Alternative splicing results in multiple transcript variants. [provided by RefSeq, Aug 2013]
<b>Protein Families:</b>	Druggable Genome, Transmembrane

### Product images:



Coomassie blue staining of purified HEPH protein (Cat# [TP304175]). The protein was produced from HEK293T cells transfected with HEPH cDNA clone (Cat# [RC204175]) using MegaTran 2.0 (Cat# [TT210002]).