

## Product datasheet for TP304175

### Hephaestin (HEPH) (NM\_014799) Human Recombinant Protein

#### Product data:

**Product Type:** Recombinant Proteins  
**Description:** Recombinant protein of human hephaestin (HEPH), transcript variant 2, 20 µg  
**Species:** Human  
**Expression Host:** HEK293T  
**Expression cDNA Clone or AA Sequence:** >RC204175 protein sequence  
Red=Cloning site Green=Tags(s)

MESGHLLWALLFMQSLWPQLTDGATRVYYLGIRDVQWNYAPKGRNVITNQPLDSDIVASSFLKSDKNRIG  
 GTYKTIYKEYKDDSYTDEVAQPAWLGLPVLQAEVGDVILHLKNFATRPYTIHPHGVFYEKDSSEGL  
 YPDGSSGPKADDSVPPGGSHIYNWTIPEGHAPTDADPACLTWIYHSHVDAPRDIATGLIGPLITCKRGA  
 LDGNSPPQRQDVDHDFLLFSVDENLSWHLNENIATYCSDPASVDKEDETFQESNRMHAINGVFGNLP  
 ELNMQAKRVAWHLFGMGNEIDVHTAFFHGQMLTTRGHHTDVANIFPATFVTAEMVPWEPGTWLISCQVN  
 SHFRDGMQALYKVKSCSMAPPVDLLTGKVRQYFIEAHEIQWDYGPMDGHDGSGKNLREPGSISDKFFQKS  
 SSRIGGTYWKVRYEAFQDETFQEKMHLEEDRHLGILGPVIRAEVGDTIQVVFYNRASQPFMMPHGVSFYE  
 KDYEGTVYNDGSSYPGLVAKPFEKVTYRWTPPHAGPTAQDPACLTWMYFSAADPIRDTNSGLVGPLLVC  
 RAGALGADGKQKGVDFKFFLLFTVLDENKSWYSNANQAAAMLDFRLLSEIDIEGFQDSNRMHAINGFLFSN  
 LPRLDMCKGDTVAVHLLGLGTETDVHGVMFQNTVQLQGMKGAAMLPHTFVMAIMQPDNLGTFEICYCQ  
 AGSHREAGMRAIYNVSQCPGHQATPRQRYQAARIYYIMAEVEWDYCPDRSWEREWHNQSEKDSYGYIFL  
 SNKDGLLGSRYKKAFFREYTDGTFRIPRPTGPEEHLGILGPLIKGEVDILTIVFKNNASRPYSVHAHG  
 VLESTTVWPLAAEPGEVVTYQWNIPERSGPGPNDSACVSWIYSAVDPIKDMYSLVGPLAICQKGIPL  
 HGGRSMDREFALLFLIFDENKSWYLEENVATHGSQDPGSINLQDETFLESNKMHAINGKLYANLRGLTM  
 YQGERVAWYMLAMGQDVDLHTIHFHAESFLYRNGENYRADVDLFPGTFEVEMVASNPGTWLMHCHVTD  
 HVHAGMETLFTVFSRTEHLSPLTVITKETEKAVPPRDIEEGNVKMLGMQIPIKNVEMLASVLVAISVTL  
 LVLALGGVWYQHRQRKLRNRRSILDDSFKLLSFKQ

TRTRPLEQKLISEEDLAANDILDYKDDDDKV

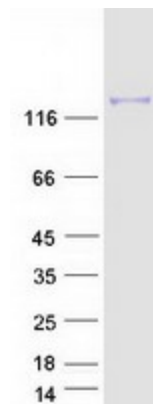
**Tag:** C-Myc/DDK  
**Predicted MW:** 100.4 kDa  
**Concentration:** >0.05 µg/µL as determined by microplate BCA method  
**Purity:** > 80% as determined by SDS-PAGE and Coomassie blue staining  
**Buffer:** 25 mM Tris-HCl, 100 mM glycine, pH 7.3, 10% glycerol



[View online »](#)

<b>Preparation:</b>	Recombinant protein was captured through anti-DDK affinity column followed by conventional chromatography steps.
<b>Note:</b>	For testing in cell culture applications, please filter before use. Note that you may experience some loss of protein during the filtration process.
<b>Storage:</b>	Store at -80°C.
<b>Stability:</b>	Stable for 12 months from the date of receipt of the product under proper storage and handling conditions. Avoid repeated freeze-thaw cycles.
<b>RefSeq:</b>	<a href="#">NP_055614</a>
<b>Locus ID:</b>	9843
<b>UniProt ID:</b>	<a href="#">Q9BQS7</a>
<b>RefSeq Size:</b>	4284
<b>Cytogenetics:</b>	Xq12
<b>RefSeq ORF:</b>	3477
<b>Synonyms:</b>	CPL
<b>Summary:</b>	This gene encodes a member of the multicopper oxidase protein family. The encoded protein is involved in the transport of dietary iron from epithelial cells of the intestinal lumen into the circulatory system, and may be involved in copper transport and homeostasis. In mouse, defects in this gene can lead to severe microcytic anemia. Alternative splicing results in multiple transcript variants. [provided by RefSeq, Aug 2013]
<b>Protein Families:</b>	Druggable Genome, Transmembrane

### Product images:



Coomassie blue staining of purified HEPH protein (Cat# TP304175). The protein was produced from HEK293T cells transfected with HEPH cDNA clone (Cat# [RC204175]) using MegaTran 2.0 (Cat# [TT210002]).