

## Product datasheet for TP304162

### SH2D2A (NM\_003975) Human Recombinant Protein

#### Product data:

Product Type:	Recombinant Proteins
Description:	Recombinant protein of human SH2 domain protein 2A (SH2D2A), 20 µg
Species:	Human
Expression Host:	HEK293T
Expression cDNA Clone or AA Sequence:	>RC204162 protein sequence <b>Red</b> =Cloning site <b>Green</b> =Tags(s)

MEFPLAQICPQGSHEAPIPTFSTFQITDMTRRSCQNLGYTAASPAPEAASSTGNAERAEVPGEGSLFL  
QAETRAWFQKTQAHWLLQHGAAPAWFHGFI TRREAERLLEPKPQGCVLRFSESAVTFVLTYRSRTCCRH  
FLLAQLRDGRHVVLGEDSAHARLQDLLLHYTAHPLSPYGETLTEPLARQTPEPAGLSLRTEESNFGSKSQ  
DPNPQYSPIIKQGQAPVPMQKEGAGEKEPSQLLRPKPIPAKPQLPPEVYTIPVPRHRPAPRPKPSNPIY  
NEPDEPIAFYAMGRGSPGEAPSNIYVEVEDEGLPATLGHPVLRKSWSRPVPGGQNTGGSQLHSENSVIGQ  
GPPLPHQPPPAPWRHTLPHNLSRQVLQDRGQAWLPLGPPQ

**TRTRPLEQKLISEEDLAANDILDYKDDDDKV**

Tag:	C-Myc/DDK
Predicted MW:	42.8 kDa
Concentration:	>0.05 µg/µL as determined by microplate BCA method
Purity:	> 80% as determined by SDS-PAGE and Coomassie blue staining
Buffer:	25 mM Tris-HCl, 100 mM glycine, pH 7.3, 10% glycerol
Preparation:	Recombinant protein was captured through anti-DDK affinity column followed by conventional chromatography steps.
Note:	For testing in cell culture applications, please filter before use. Note that you may experience some loss of protein during the filtration process.
Storage:	Store at -80°C.
Stability:	Stable for 12 months from the date of receipt of the product under proper storage and handling conditions. Avoid repeated freeze-thaw cycles.
RefSeq:	<a href="#">NP_003966</a>
Locus ID:	9047



[View online »](#)

UniProt ID: [Q9NP31](#)

RefSeq Size: 1661

Cytogenetics: 1q23.1

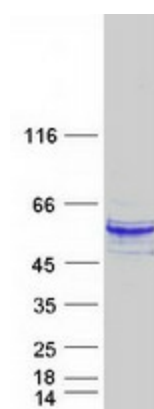
RefSeq ORF: 1167

Synonyms: F2771; SCAP; TSAD; VRAP

**Summary:** This gene encodes an adaptor protein thought to function in T-cell signal transduction. A related protein in mouse is responsible for the activation of lymphocyte-specific protein-tyrosine kinase and functions in downstream signaling. Alternative splicing results in multiple transcript variants. [provided by RefSeq, Mar 2010]

**Protein Pathways:** VEGF signaling pathway

### Product images:



Coomassie blue staining of purified SH2D2A protein (Cat# TP304162). The protein was produced from HEK293T cells transfected with SH2D2A cDNA clone (Cat# [RC204162]) using MegaTran 2.0 (Cat# [TT210002]).