

Product datasheet for TP304152

GBE1 (NM_000158) Human Recombinant Protein

Product data:

Product Type:	Recombinant Proteins
Description:	Recombinant protein of human glucan (1,4-alpha-), branching enzyme 1 (GBE1), 20 µg
Species:	Human
Expression Host:	HEK293T
Expression cDNA Clone or AA Sequence:	>RC204152 protein sequence Red =Cloning site Green =Tags(s)

MAAPMTPAARPEDYEAALNAALADVPELARLLEIDPYLKPYAVDFQRRYKQFSQILKNIGENEGGIDKFS
RGYESFGVHRCADGGLYCKEWAPGAEGVFLTGFNGWNPFSYPYKLDYGKWELYIPPKQNKSVLPHG
S
KLVVITSKSGEILYRISPWAKYVVREGDNVNYDWHWDPEHSYEFKHSRPPKPRSLRIYESHVGISSHE
GKVASYKHFTCNVLPRIKGLGYNCIQLMAIMEHAYYASFGYQITSFFAASSRYGSPEELQELVDTAHSMG
IIVLLDVHSHASKNSADGLNMFDTSCYFHSGPRGTHDLWDSRLFAYSSWEVLRFLSNIRWWLEEYR
FDGFRFDGVTSMYHHHGVGQGFSGDYSEYFGLQVDEDALTYLMLANHLVHTLCPDSITIAEDVSGMPAL
CSPISQGGGGFDYRLAMAIPDKWIQLLKEFKDEDWNMGDIVYTLNRRYLEKCIAYAESHDAQLVGDKSL
AFWLMDAEMYTNMSVLTPTFPVIDRGIQLHKMIRLITHGLGGEGYLNFMGNFEGHPEWLDFFPRKGNNE
SY
HYARRQFHLDLDDLLRYKFLNNFDRDMNRLEERYGWLAAPQAYVSEKHEGNKIIAFERAGLLFIFNFHPS
KSYTDYRVGTALPGKFKIVLDSDAAEYGGHQRLDHSTDFSEAFEHNGRPYSLLVYIPSRVALILQNVDL
PN

TRTRPLEQKLISEEDLAANDILDYKDDDDKV

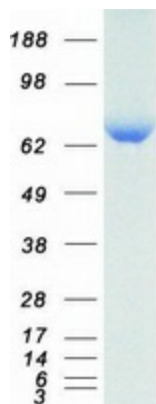
Tag:	C-Myc/DDK
Predicted MW:	80.3 kDa
Concentration:	>0.05 µg/µL as determined by microplate BCA method
Purity:	> 80% as determined by SDS-PAGE and Coomassie blue staining
Buffer:	25 mM Tris-HCl, 100 mM glycine, pH 7.3, 10% glycerol
Preparation:	Recombinant protein was captured through anti-DDK affinity column followed by conventional chromatography steps.



[View online »](#)

Note:	For testing in cell culture applications, please filter before use. Note that you may experience some loss of protein during the filtration process.
Storage:	Store at -80°C.
Stability:	Stable for 12 months from the date of receipt of the product under proper storage and handling conditions. Avoid repeated freeze-thaw cycles.
RefSeq:	NP_000149
Locus ID:	2632
UniProt ID:	Q04446
RefSeq Size:	3118
Cytogenetics:	3p12.2
RefSeq ORF:	2106
Synonyms:	APBD; GBE; GSD4
Summary:	The protein encoded by this gene is a glycogen branching enzyme that catalyzes the transfer of alpha-1,4-linked glucosyl units from the outer end of a glycogen chain to an alpha-1,6 position on the same or a neighboring glycogen chain. Branching of the chains is essential to increase the solubility of the glycogen molecule and, consequently, in reducing the osmotic pressure within cells. Highest level of this enzyme are found in liver and muscle. Mutations in this gene are associated with glycogen storage disease IV (also known as Andersen's disease). [provided by RefSeq, Jul 2008]
Protein Families:	Druggable Genome
Protein Pathways:	Metabolic pathways, Starch and sucrose metabolism

Product images:



Coomassie blue staining of purified GBE1 protein (Cat# TP304152). The protein was produced from HEK293T cells transfected with GBE1 cDNA clone (Cat# [RC204152]) using MegaTran 2.0 (Cat# [TT210002]).