

Product datasheet for **TP304151L**

Bone marrow stromal cell antigen 1 (BST1) (NM_004334) Human Recombinant Protein

Product data:

Product Type:	Recombinant Proteins
Description:	Recombinant protein of human bone marrow stromal cell antigen 1 (BST1), 1 mg
Species:	Human
Expression Host:	HEK293T
Expression cDNA Clone or AA Sequence:	>RC204151 protein sequence Red =Cloning site Green =Tags(s)

MAAQGCAASRLLQLLLQLLLLLLLLLAAGGARARWRGEGTSAHLRDIFLGRCAEYRALLSPEQRNKNCTAI
WEAFKVALDKDPCSVLPDYDLFINLSRHSIPRDKSLFWENSHLLVNSFADNTRRFMPLSDVLYGRVADF
LSWCRQKNDSGLDYQSCPTSEDCENNPVDSFWKRASIQYKDSGVIHVMLNGSEPTGAYPIKGGFFADYE
IPNLQKEKITRIEIVVMHEIGGPNVESCGEKSMKVLEKRLKDMGFQYSCINDYRPVKLLQCVDHSTHPDC
ALKSAAAATQRKAPSLYTEQRAGLIIPFLVLASRTQL

TRTRPLEQKLISEEDLAANDILDYKDDDDKV

Tag:	C-Myc/DDK
Predicted MW:	35.5 kDa
Concentration:	>0.05 µg/µL as determined by microplate BCA method
Purity:	> 80% as determined by SDS-PAGE and Coomassie blue staining
Buffer:	25 mM Tris-HCl, 100 mM glycine, pH 7.3, 10% glycerol
Preparation:	Recombinant protein was captured through anti-DDK affinity column followed by conventional chromatography steps.
Note:	For testing in cell culture applications, please filter before use. Note that you may experience some loss of protein during the filtration process.
Storage:	Store at -80°C.
Stability:	Stable for 12 months from the date of receipt of the product under proper storage and handling conditions. Avoid repeated freeze-thaw cycles.
RefSeq:	<u>NP_004325</u>
Locus ID:	683



[View online »](#)

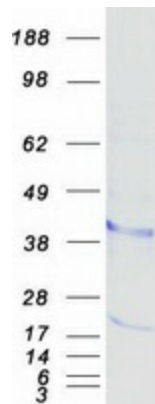
UniProt ID: [Q10588](#)
RefSeq Size: 1497
Cytogenetics: 4p15.32
RefSeq ORF: 954
Synonyms: CD157

Summary: Bone marrow stromal cell antigen-1 is a stromal cell line-derived glycosylphosphatidylinositol-anchored molecule that facilitates pre-B-cell growth. The deduced amino acid sequence exhibits 33% similarity with CD38. BST1 expression is enhanced in bone marrow stromal cell lines derived from patients with rheumatoid arthritis. The polyclonal B-cell abnormalities in rheumatoid arthritis may be, at least in part, attributed to BST1 overexpression in the stromal cell population. [provided by RefSeq, Jul 2008]

Protein Families: Transmembrane

Protein Pathways: Calcium signaling pathway, Metabolic pathways, Nicotinate and nicotinamide metabolism

Product images:



Coomassie blue staining of purified BST1 protein (Cat# [TP304151]). The protein was produced from HEK293T cells transfected with BST1 cDNA clone (Cat# [RC204151]) using MegaTran 2.0 (Cat# [TT210002]).