

## Product datasheet for TP304151

### Bone marrow stromal cell antigen 1 (BST1) (NM\_004334) Human Recombinant Protein

#### Product data:

Product Type:	Recombinant Proteins
Description:	Recombinant protein of human bone marrow stromal cell antigen 1 (BST1), 20 µg
Species:	Human
Expression Host:	HEK293T
Expression cDNA Clone or AA Sequence:	>RC204151 protein sequence <b>Red</b> =Cloning site <b>Green</b> =Tags(s)
	<p>MAAQGCAASRLLQLLLQLLLLLLLLLAAGGARARWRGEGTSAHLRDIFLGRCAEYRALLSPEQRNKNCTAI WEAFKVALDKDPCSVLPDYDLFINLSRHSIPRDKSLFWENSHLLVNSFADNTRRFMPLSDVLYGRVADF LSWCRQKNDSGLDYQSCPTSEDCENNPVDSFWKRASIQYSKDSSGVIHVMLNGSEPTGAYPIKGGFFADYE IPNLQKEKITRIEIVVMHEIGGPNVESCGEKSMKVLEKRLKDMGFQYSCINDYRPVKLLQCVDHSTHPDC ALKSAAAATQRKAPSLYTEQRAGLIIPFLVLASRTQL</p> <p><b>TRTRPLEQKLISEEDLAANDILDYKDDDDKV</b></p>
Tag:	C-Myc/DDK
Predicted MW:	35.5 kDa
Concentration:	>0.05 µg/µL as determined by microplate BCA method
Purity:	> 80% as determined by SDS-PAGE and Coomassie blue staining
Buffer:	25 mM Tris-HCl, 100 mM glycine, pH 7.3, 10% glycerol
Preparation:	Recombinant protein was captured through anti-DDK affinity column followed by conventional chromatography steps.
Note:	For testing in cell culture applications, please filter before use. Note that you may experience some loss of protein during the filtration process.
Storage:	Store at -80°C.
Stability:	Stable for 12 months from the date of receipt of the product under proper storage and handling conditions. Avoid repeated freeze-thaw cycles.
RefSeq:	<a href="#">NP_004325</a>
Locus ID:	683



[View online »](#)

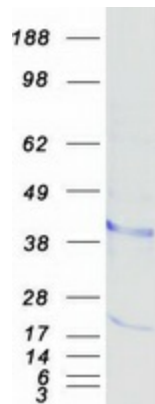
UniProt ID: [Q10588](#)  
RefSeq Size: 1497  
Cytogenetics: 4p15.32  
RefSeq ORF: 954  
Synonyms: CD157

**Summary:** Bone marrow stromal cell antigen-1 is a stromal cell line-derived glycosylphosphatidylinositol-anchored molecule that facilitates pre-B-cell growth. The deduced amino acid sequence exhibits 33% similarity with CD38. BST1 expression is enhanced in bone marrow stromal cell lines derived from patients with rheumatoid arthritis. The polyclonal B-cell abnormalities in rheumatoid arthritis may be, at least in part, attributed to BST1 overexpression in the stromal cell population. [provided by RefSeq, Jul 2008]

**Protein Families:** Transmembrane

**Protein Pathways:** Calcium signaling pathway, Metabolic pathways, Nicotinate and nicotinamide metabolism

### Product images:



Coomassie blue staining of purified BST1 protein (Cat# TP304151). The protein was produced from HEK293T cells transfected with BST1 cDNA clone (Cat# [RC204151]) using MegaTran 2.0 (Cat# [TT210002]).