

Product datasheet for **TP304143L**

SMAD9 (NM_005905) Human Recombinant Protein

Product data:

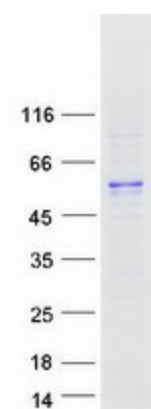
Product Type:	Recombinant Proteins
Description:	Recombinant protein of human SMAD family member 9 (SMAD9), transcript variant b, 1 mg
Species:	Human
Expression Host:	HEK293T
Expression cDNA Clone or AA Sequence:	>RC204143 protein sequence Red =Cloning site Green =Tags(s)
	 MHSTTPISSLFSFTSPAVKRLLGWKQGDEEEKWAEKAVDSLKLLKKKGGAMDELERALSCPGQPSKCVT IPRSLDGRQLQVSHRKGLPHVIYCRVWRWPDLSHHEKPLECCEFPFGSKQKEVCINPYHYRRVETPVLP PVLVPRHSEYNPQLSLLAKFRSASLHSEPLMPHNATYPDSFQQPPCSALPPSPSHAFSQSPCTASYPHSP GSPSEPEPYQHSDFRPVCYEEPQHWCSVAYYELNRRVGETFQASSRVLIDGFTDPSNNRNRFLGLLS NVNRNSTIENTRRHIGKGVHLYYVGGEVYAEVSDSSIFVQSRNCNYQHGFHPATVCKIPSGCSLKVFNN QLFAQLLAQSVHHGFEVYELTKMCTIRMSFVKGWGAEYHRQDVTSTPCWIEIHLHGPLQWLDKVLQMG SPHNPISSVS SGPTRTRPLEQKLISEEDLAANDILDYKDDDDKV
Tag:	C-Myc/DDK
Predicted MW:	48.5 kDa
Concentration:	>0.05 µg/µL as determined by microplate BCA method
Purity:	> 80% as determined by SDS-PAGE and Coomassie blue staining
Buffer:	25 mM Tris-HCl, 100 mM glycine, pH 7.3, 10% glycerol
Preparation:	Recombinant protein was captured through anti-DDK affinity column followed by conventional chromatography steps.
Note:	For testing in cell culture applications, please filter before use. Note that you may experience some loss of protein during the filtration process.
Storage:	Store at -80°C.
Stability:	Stable for 12 months from the date of receipt of the product under proper storage and handling conditions. Avoid repeated freeze-thaw cycles.
RefSeq:	NP_005896



[View online »](#)

Locus ID:	4093
UniProt ID:	O15198 , A0A024RDR3
RefSeq Size:	5481
Cytogenetics:	13q13.3
RefSeq ORF:	1290
Synonyms:	MADH6; MADH9; PPH2; SMAD8; SMAD8/9; SMAD8A; SMAD8B
Summary:	The protein encoded by this gene is a member of the SMAD family, which transduces signals from TGF-beta family members. The encoded protein is activated by bone morphogenetic proteins and interacts with SMAD4. Two transcript variants encoding different isoforms have been found for this gene.[provided by RefSeq, Jan 2010]
Protein Families:	ES Cell Differentiation/IPS, Transcription Factors
Protein Pathways:	TGF-beta signaling pathway

Product images:



Coomassie blue staining of purified SMAD9 protein (Cat# [TP304143]). The protein was produced from HEK293T cells transfected with SMAD9 cDNA clone (Cat# [RC204143]) using MegaTran 2.0 (Cat# [TT210002]).