

## Product datasheet for TP304135

### EB3 (MAPRE3) (NM\_012326) Human Recombinant Protein

#### Product data:

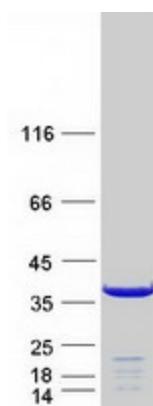
Product Type:	Recombinant Proteins
Description:	Recombinant protein of human microtubule-associated protein, RP/EB family, member 3 (MAPRE3), 20 µg
Species:	Human
Expression Host:	HEK293T
Expression cDNA Clone or AA Sequence:	>RC204135 protein sequence Red=Cloning site Green=Tags(s)
	<p>MAVNVYSTSVTSENLSRHDMLAWVNDLHNLNYTKIEQLCSGAAYCQFMDMLFPGCVHLRHKVKFQAKLEHE YIHNFKVLQAAFKKMGVDKIIPVEKLVKGFQDNFEFIQWFKKFFDANYDGKDYNPLLARQGQDVAPPPN PGDQIFNKSCLKLIGTAVPQRTSPTGPKNMQTSGRLSNVAPPILRKNPPSARNGGHETDAQILELNQQLV DLKLTVDGLEKERDFYFSKLRDIELICQEHESENSPVISGIIGILYATEEGFAPPEDDEIEEHQQEDQDE Y</p> <p>TRTRPLEQKLISEEDLAANDILDYKDDDDKV</p>
Tag:	C-Myc/DDK
Predicted MW:	31.8 kDa
Concentration:	>0.05 µg/µL as determined by microplate BCA method
Purity:	> 80% as determined by SDS-PAGE and Coomassie blue staining
Buffer:	25 mM Tris-HCl, 100 mM glycine, pH 7.3, 10% glycerol
Preparation:	Recombinant protein was captured through anti-DDK affinity column followed by conventional chromatography steps.
Note:	For testing in cell culture applications, please filter before use. Note that you may experience some loss of protein during the filtration process.
Storage:	Store at -80°C.
Stability:	Stable for 12 months from the date of receipt of the product under proper storage and handling conditions. Avoid repeated freeze-thaw cycles.
RefSeq:	<a href="#">NP_036458</a>
Locus ID:	22924



[View online »](#)

UniProt ID:	<a href="#">Q9UPY8</a>
RefSeq Size:	1880
Cytogenetics:	2p23.3
RefSeq ORF:	843
Synonyms:	EB3; EBF3; EBF3-S; RP3
Summary:	The protein encoded by this gene is a member of the RP/EB family of genes. The protein localizes to the cytoplasmic microtubule network and binds APCL, a homolog of the adenomatous polyposis coli tumor suppressor gene. [provided by RefSeq, Jul 2008]

### Product images:



Coomassie blue staining of purified MAPRE3 protein (Cat# TP304135). The protein was produced from HEK293T cells transfected with MAPRE3 cDNA clone (Cat# [RC204135]) using MegaTran 2.0 (Cat# [TT210002]).