

## Product datasheet for TP304114

### NLE1 (NM\_018096) Human Recombinant Protein

#### Product data:

Product Type:	Recombinant Proteins
Description:	Recombinant protein of human notchless homolog 1 (Drosophila) (NLE1), transcript variant 1, 20 µg
Species:	Human
Expression Host:	HEK293T
Expression cDNA Clone or AA Sequence:	>RC204114 protein sequence Red=Cloning site Green=Tags(s)

MAAAVADEAVARDVQRLLVQFQDEGGQLLGSPFDVPVDITPDRLQLVCNALLAQEDPLPLAFFVHDAEIV  
 SSLGKTLESQAVETEKVLDIIYQPQAIFRVRVAVTRCTSSLEGHSEAVISVAFSPTGKYLASGSGDTTVRF  
 WDLSTETPHFTCKGHRHWVLSISWSPDGKKLASGCKNGQILLWDPSTGKQVGRTLAGHSKWITGLSWEPL  
 HANPECRYVASSSKDGSVRIWDTTAGRCERILTGHTQSVTCLRWGGDGLLYSASQDRTIKVVRAHDGVLG  
 RTLQGHGHVWNTMALSTDYALRTGAFEPAEASVNPQDLQGSLQELKERALSRYNLVRGQGPERLVSGSDD  
 FTLFLWSPAEDKKPLTRMTGHQALINQVLFSPDSRIVASASFDKSIKLWDGRTGKYLASLRGHVAAYQI  
 AWSADSRLLVSGSSDSTLKVWVDVKAQKLAMDLPGHADEVYAVDWSPDGQRVASGGKDKCLRIWRR

TRTRPLEQKLISEEDLAANDILDYKDDDDKV

Tag:	C-Myc/DDK
Predicted MW:	53.1 kDa
Concentration:	>0.05 µg/µL as determined by microplate BCA method
Purity:	> 80% as determined by SDS-PAGE and Coomassie blue staining
Buffer:	25 mM Tris-HCl, 100 mM glycine, pH 7.3, 10% glycerol
Preparation:	Recombinant protein was captured through anti-DDK affinity column followed by conventional chromatography steps.
Note:	For testing in cell culture applications, please filter before use. Note that you may experience some loss of protein during the filtration process.
Storage:	Store at -80°C.
Stability:	Stable for 12 months from the date of receipt of the product under proper storage and handling conditions. Avoid repeated freeze-thaw cycles.



[View online »](#)

RefSeq: [NP\\_060566](#)

Locus ID: 54475

UniProt ID: [Q9NVX2](#)

RefSeq Size: 2627

Cytogenetics: 17q12

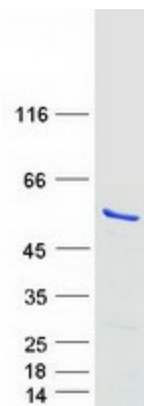
RefSeq ORF: 1455

Synonyms: NLE

**Summary:** Plays a role in regulating Notch activity. Plays a role in regulating the expression of CDKN1A and several members of the Wnt pathway, probably via its effects on Notch activity. Required during embryogenesis for inner mass cell survival (By similarity).[UniProtKB/Swiss-Prot Function]

**Protein Families:** Druggable Genome, Stem cell - Pluripotency

### Product images:



Coomassie blue staining of purified NLE1 protein (Cat# TP304114). The protein was produced from HEK293T cells transfected with NLE1 cDNA clone (Cat# [RC204114]) using MegaTran 2.0 (Cat# [TT210002]).