

Product datasheet for **TP304099**

CYLD (NM_001042355) Human Recombinant Protein

Product data:

Product Type:	Recombinant Proteins
Description:	Recombinant protein of human cylindromatosis (turban tumor syndrome) (CYLD), transcript variant 2, 20 µg
Species:	Human
Expression Host:	HEK293T
Expression cDNA Clone or AA Sequence:	>RC204099 protein sequence Red =Cloning site Green =Tags(s)

MSSGLWSQEKVTSFYWEERIFYLLQECVTDKQTQKLLKVPKGSIGQYIQDRSVGHSRIPSAKGKKNQI
GLKILEQPHAVLFVDEKDVVEINEKFTELLAITNCEERFSLFKNRNRLSKGLQIDVGCVPKQVLRSGEE
KFPGVVFRGPLLAERTVSGIFFGVELLEEGRGQGFDTGVYQKQLFQCEDEDCGVFVALDKLELIEDDDT
ALESYAGPGDTMQVELPPEINRSVSLKVGETIESGTVIFCDVLPKESLGYFVGVDMNDPIGNWDGRF
DGVQLCSFACVESTILLHINDIIPESVTQERRPPKLAFM SRGVGDKGSSSHNPKATGSTSDPGNRNRSE
LFYTLNGSSVDSQPQSKSKNTWYIDEVAEDPAKSLTEISTDFDRSSPPLQPPPVNSLTENRFHSLPFSL
TKMPNTNGSIGHSPLSLSAQSVMEELNTAPVQESPLAMPNGSHGLEVGSLAEVKENPPFYGVIRWIGQ
PPGLNEVLAGLELEDECACTDGTFRGTRYFTCALKKALFVKLSCRPSRFAFLQPVSNQIERCNSLAF
GGYLSEWEENTPPKMEKEGLEIMIGKKKGIQGHYNSCYLDSTLFLCLFAFSSVLDTVLLRPKEKNDVEYY
SETQELLRTEIVNPLRIYGYVCATKIMKLRKILEKVEAASGFTSEEKDPPEFLNLFHHILRVEPLLKIR
SAGQKVQDCYFYQIFMEKNEKVGVPITIQQLLEWSFINSNLKFAEAPSCLIIQMPRFGKDFKLFKIFPSL
ELNITDILLEDTPRQCRICGGLAMYECRECYDDPDISAGKIKQFCKTCNTQVHLHPKRLNHKYNPVS LPKD
LPDWDWRHGCIPCQNMELFAVLCIETSHYVAFVKYKDDSAWLFSDMADRGGQNGFNIPQVTPCPEVG
EYLMKMSLEDLHSLDSRRIQGCARRLLCDAYMCMYQSPTMSLYK

TRTRPLEQKLISEEDLAANDILDYKDDDDKV

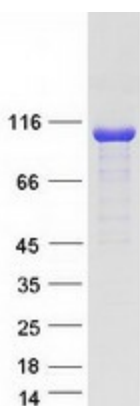
Tag:	C-Myc/DDK
Predicted MW:	106.9 kDa
Concentration:	>0.05 µg/µL as determined by microplate BCA method
Purity:	> 80% as determined by SDS-PAGE and Coomassie blue staining
Buffer:	25 mM Tris-HCl, 100 mM glycine, pH 7.3, 10% glycerol



[View online »](#)

Preparation:	Recombinant protein was captured through anti-DDK affinity column followed by conventional chromatography steps.
Note:	For testing in cell culture applications, please filter before use. Note that you may experience some loss of protein during the filtration process.
Storage:	Store at -80°C.
Stability:	Stable for 12 months from the date of receipt of the product under proper storage and handling conditions. Avoid repeated freeze-thaw cycles.
RefSeq:	<u>NP_001035814</u>
Locus ID:	1540
UniProt ID:	<u>Q9NQC7, A0A024R6T1</u>
RefSeq Size:	8584
Cytogenetics:	16q12.1
RefSeq ORF:	2859
Synonyms:	BRSS; CDMT; CYLD1; CYLDI; EAC; FTDALS8; MFT; MFT1; SBS; TEM; USPL2
Summary:	This gene encodes a cytoplasmic protein with three cytoskeletal-associated protein-glycine-conserved (CAP-GLY) domains that functions as a deubiquitinating enzyme. Mutations in this gene have been associated with cylindromatosis, multiple familial trichoepithelioma, and Brooke-Spiegler syndrome. Alternate transcriptional splice variants, encoding different isoforms, have been characterized. [provided by RefSeq, Jul 2008]
Protein Families:	Druggable Genome
Protein Pathways:	RIG-I-like receptor signaling pathway

Product images:



Coomassie blue staining of purified CYLD protein (Cat# TP304099). The protein was produced from HEK293T cells transfected with CYLD cDNA clone (Cat# [RC204099]) using MegaTran 2.0 (Cat# [TT210002]).