

Product datasheet for **TP304085M**

PPCDC (NM_021823) Human Recombinant Protein

Product data:

Product Type:	Recombinant Proteins
Description:	Recombinant protein of human phosphopantothencysteine decarboxylase (PPCDC), 100 µg
Species:	Human
Expression Host:	HEK293T
Expression cDNA Clone or AA Sequence:	>RC204085 protein sequence Red =Cloning site Green =Tags(s)

MEPKASCPAAAPLMERKFHVLVGVGTGSVAALKLPLLVSLLDIPGLEVAWVTTTERAKHFYSPQDIPVTLY
SDADEWEMWKSRSDPVLHIDLRRWADLLLVAPLDANTLGKVASGICDNLTCVMRAWDRSKPLLFCPAMN
TAMWEHPITAQQVDQLKAFGYVEIPCVAKKLVCGDEGLGAMAEVGTIVDKVKEVLFQHSQFQQS

TRTRPLEQKLISEEDLAANDILDYKDDDDKV

Tag:	C-Myc/DDK
Predicted MW:	22.2 kDa
Concentration:	>0.05 µg/µL as determined by microplate BCA method
Purity:	> 80% as determined by SDS-PAGE and Coomassie blue staining
Buffer:	25 mM Tris-HCl, 100 mM glycine, pH 7.3, 10% glycerol
Preparation:	Recombinant protein was captured through anti-DDK affinity column followed by conventional chromatography steps.
Note:	For testing in cell culture applications, please filter before use. Note that you may experience some loss of protein during the filtration process.
Storage:	Store at -80°C.
Stability:	Stable for 12 months from the date of receipt of the product under proper storage and handling conditions. Avoid repeated freeze-thaw cycles.
RefSeq:	NP_068595
Locus ID:	60490
UniProt ID:	Q96CD2
RefSeq Size:	2268



[View online »](#)

Cytogenetics: 15q24.2

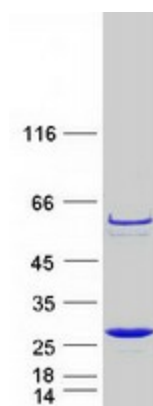
RefSeq ORF: 612

Synonyms: coaC; MDS018; PPC-DC

Summary: Biosynthesis of coenzyme A (CoA) from pantothenic acid (vitamin B5) is an essential universal pathway in prokaryotes and eukaryotes. PPCDC (EC 4.1.1.36), one of the last enzymes in this pathway, converts phosphopantothencysteine to 4-prime-phosphopantetheine (Daugherty et al., 2002 [PubMed 11923312]).[supplied by OMIM, Mar 2008]

Protein Pathways: Metabolic pathways, Pantothenate and CoA biosynthesis

Product images:



Coomassie blue staining of purified PPCDC protein (Cat# [TP304085]). The protein was produced from HEK293T cells transfected with PPCDC cDNA clone (Cat# [RC204085]) using MegaTran 2.0 (Cat# [TT210002]).