

Product datasheet for **TP304084M**

ERGIC3 (NM_015966) Human Recombinant Protein

Product data:

Product Type: Recombinant Proteins

Description: Recombinant protein of human ERGIC and golgi 3 (ERGIC3), transcript variant 2, 100 µg

Species: Human

Expression Host: HEK293T

Expression cDNA Clone or AA Sequence: >RC204084 protein sequence
Red=Cloning site **Green**=Tags(s)

MEALGKLKQFDAYPKTLEDFRVKTCGGATVTIVSGLLMLLLFLSELQYYLTTEVHPELYVDKSRGDKLKI
NIDVLFPHMPCAYLSIDAMDVAGEQQLDVEHNLFKQRLDKDGIPVSSEAERHELKKEVTVFDPDSLDPD
RCESCYGAEAEEDIKCCNTCEDVREAYRRRGWAFKNPDTIEQCRREGFSQKMQEQKNEGCQVYGFLEVNKV
AGNFHFAPGKSFQQSHVHVHDLQSFGLDNINMTHYIQHLSFGEDYPGIVNPLDHTNVTAPQASMMFQYFV
KVVPTVYMKVDGEVLRNQSFSVTRHEKVANGLLDGQGLPGVFVLYELSPMMVKLTEKHSFTHFLTGVCA
IIGMFTVAGLIDSLIYHSARAIQKKIDLGKTT

TRTRPLEQKLISEEDLAANDILDYKDDDDKV

Tag: C-Myc/DDK

Predicted MW: 43 kDa

Concentration: >0.05 µg/µL as determined by microplate BCA method

Purity: > 80% as determined by SDS-PAGE and Coomassie blue staining

Buffer: 25 mM Tris-HCl, 100 mM glycine, pH 7.3, 10% glycerol

Preparation: Recombinant protein was captured through anti-DDK affinity column followed by conventional chromatography steps.

Note: For testing in cell culture applications, please filter before use. Note that you may experience some loss of protein during the filtration process.

Storage: Store at -80°C.

Stability: Stable for 12 months from the date of receipt of the product under proper storage and handling conditions. Avoid repeated freeze-thaw cycles.

RefSeq: [NP_057050](#)

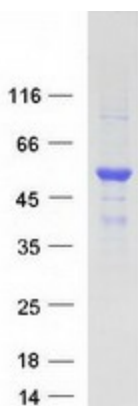
Locus ID: 51614



[View online »](#)

UniProt ID:	Q9Y282 , A2TJK5
RefSeq Size:	1368
Cytogenetics:	20q11.22
RefSeq ORF:	1149
Synonyms:	C2orf47; C20orf47; CGI-54; dj47704.2; Erv46; NY-BR-84; PRO0989; SDBCAG84
Summary:	Possible role in transport between endoplasmic reticulum and Golgi.[UniProtKB/Swiss-Prot Function]
Protein Families:	Transmembrane

Product images:



Coomassie blue staining of purified ERGIC3 protein (Cat# [TP304084]). The protein was produced from HEK293T cells transfected with ERGIC3 cDNA clone (Cat# [RC204084]) using MegaTran 2.0 (Cat# [TT210002]).