

Product datasheet for **TP304078**

Transcription factor 25 (TCF25) (NM_014972) Human Recombinant Protein

Product data:

Product Type: Recombinant Proteins
Description: Recombinant protein of human transcription factor 25 (basic helix-loop-helix) (TCF25), 20 µg
Species: Human
Expression Host: HEK293T
Expression cDNA Clone or AA Sequence: >RC204078 protein sequence
Red=Cloning site **Green**=Tags(s)

MSRRALRRLRGEQRGQEPLGPGALHFDLRDDDDAEEEGPKRELGVRRPVGAGKEGVRVNNRFELINIDDL
EDDPVWNGERSGCALTDVAPGNKGRGQGRGNTESKTDGDDTETVPSEQSHASGKLRKKKKKQKNKKSSTG
EASENGLEDIDRILERIEDSTGLNRPGPAPLSSRKHVLYVEHRHLNPDELKRYFGARAILGEQRPRQRQ
RVYPKCTWLTPKSTWPRYSKPLSMRLLSEKKGLSFFAFEHSEEYQQAQHKFLVAVESMEPNIVVLLQ
TSPYHVDSLLQLSDACRFQEDQEMARDLVERALYSMECAFHPLFSLTSGACRLDYRRPENRSFYLYLYKQ
MSFLEKRGCPRTALEYCKLILSLEPDEDPLCMLLLIDHLALRARNYEYLIRLFQEWEAHRNLSQLPNFAF
SVPLAYFLLSQQTDLPECEQSSARQKASLLIQQALTMFPGVLLPLLESCSVRPDASVSSHRFFGPNAEIS
QPPALSQVLNLYLGRSHFLWKEPATMSWLEENVHEVLQAVDAGDPAVEACENRRKVLYQRAPRNIHRHVI
LSEIKEAVAALPPDVTTQSVMGFDPLPPSDTIYSYVRPERLSPISHGNTIALFFRSLLPNYTMERPEE
GVAGGLNRNQGLNRLMLAVRDMANFHLNDLEAPHEDDAEGEGEWD

TRTRPLEQKLISEEDLAANDILDYKDDDDKV

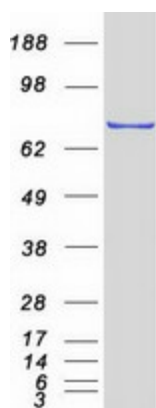
Tag: C-Myc/DDK
Predicted MW: 76.5 kDa
Concentration: >0.05 µg/µL as determined by microplate BCA method
Purity: > 80% as determined by SDS-PAGE and Coomassie blue staining
Buffer: 25 mM Tris-HCl, 100 mM glycine, pH 7.3, 10% glycerol
Preparation: Recombinant protein was captured through anti-DDK affinity column followed by conventional chromatography steps.
Note: For testing in cell culture applications, please filter before use. Note that you may experience some loss of protein during the filtration process.
Storage: Store at -80°C.



[View online »](#)

Stability:	Stable for 12 months from the date of receipt of the product under proper storage and handling conditions. Avoid repeated freeze-thaw cycles.
RefSeq:	NP_055787
Locus ID:	22980
UniProt ID:	Q9BQ70
RefSeq Size:	2286
Cytogenetics:	16q24.3
RefSeq ORF:	2028
Synonyms:	FKSG26; hKIAA1049; Hulp1; NULP1; PRO2620
Summary:	TCF25 is a member of the basic helix-loop-helix (bHLH) family of transcription factors that are important in embryonic development (Steen and Lindholm, 2008 [PubMed 18068114]). [supplied by OMIM, Sep 2008]

Product images:



Coomassie blue staining of purified TCF25 protein (Cat# TP304078). The protein was produced from HEK293T cells transfected with TCF25 cDNA clone (Cat# [RC204078]) using MegaTran 2.0 (Cat# [TT210002]).