

Product datasheet for **TP304060M**

IGFBP6 (NM_002178) Human Recombinant Protein

Product data:

| | |
|-----------------------|--|
| Product Type: | Recombinant Proteins |
| Description: | Recombinant protein of human insulin-like growth factor binding protein 6 (IGFBP6), 100 µg |
| Species: | Human |
| Expression Host: | HEK293T |
| Expression cDNA | >RC204060 protein sequence |
| Clone or AA Sequence: | Red=Cloning site Green=Tags(s) |

MTPHRLLPLLLLLALLLAASPGGALARCPGCGQGVQAGCPGGCVEEEDGGSPAEGCAEAEGLRREGQE
CGVYTPNCAPGLQCHPPKDDEAPLRALLLGRGRCLPARAPAVAEENPKESKPQAGTARPQDVNRRDQQRN
PGTSTTPSQPNSAGVQDTEMGPCRRHLDSVLQQLQTEVYRGAQTLVVPNCDFHRGFYRKRQCRSSQGQRRG
PCWCVDRMGKSLPGSPDNGSSSCTGSSG

TRTRPLEQKLISEEDLAANDILDYKDDDDKV

| | |
|----------------|--|
| Tag: | C-Myc/DDK |
| Predicted MW: | 25.1 kDa |
| Concentration: | >0.05 µg/µL as determined by microplate BCA method |
| Purity: | > 80% as determined by SDS-PAGE and Coomassie blue staining |
| Buffer: | 25 mM Tris-HCl, 100 mM glycine, pH 7.3, 10% glycerol |
| Preparation: | Recombinant protein was captured through anti-DDK affinity column followed by conventional chromatography steps. |
| Note: | For testing in cell culture applications, please filter before use. Note that you may experience some loss of protein during the filtration process. |
| Storage: | Store at -80°C. |
| Stability: | Stable for 12 months from the date of receipt of the product under proper storage and handling conditions. Avoid repeated freeze-thaw cycles. |
| RefSeq: | NP_002169 |
| Locus ID: | 3489 |
| UniProt ID: | P24592 |



[View online >](#)

RefSeq Size: 980

Cytogenetics: 12q13.13

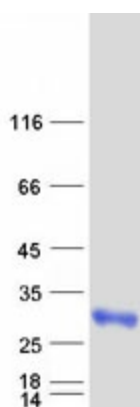
RefSeq ORF: 720

Synonyms: IBP6

Summary: IGF-binding proteins prolong the half-life of the IGFs and have been shown to either inhibit or stimulate the growth promoting effects of the IGFs on cell culture. They alter the interaction of IGFs with their cell surface receptors.[UniProtKB/Swiss-Prot Function]

Protein Families: Secreted Protein

Product images:



Coomassie blue staining of purified IGFBP6 protein (Cat# [TP304060]). The protein was produced from HEK293T cells transfected with IGFBP6 cDNA clone (Cat# [RC204060]) using MegaTran 2.0 (Cat# [TT210002]).