

Product datasheet for **TP304055**

COTL1 (NM_021149) Human Recombinant Protein

Product data:

Product Type:	Recombinant Proteins
Description:	Recombinant protein of human coactosin-like 1 (Dictyostelium) (COTL1), 20 µg
Species:	Human
Expression Host:	HEK293T
Expression cDNA Clone or AA Sequence:	>RC204055 protein sequence Red =Cloning site Green =Tags(s)
	 MATKIDKEACRAAYNLVRDDGSAVIWVTFKYDGSTIVPGEQGAEQHFIIQCTDDVRLFAFVRFTTGDM SKRSKFALITWIGENVSLQRAKTGTDKTLVKEVVQNFakeFVISDRKELEEDFIKSELKKAGGANYDAQ TE TRTRPLEQKLISEEDLAANDILDYKDDDDKV
Tag:	C-Myc/DDK
Predicted MW:	15.8 kDa
Concentration:	>0.05 µg/µL as determined by microplate BCA method
Purity:	> 80% as determined by SDS-PAGE and Coomassie blue staining
Buffer:	25 mM Tris-HCl, 100 mM glycine, pH 7.3, 10% glycerol
Preparation:	Recombinant protein was captured through anti-DDK affinity column followed by conventional chromatography steps.
Note:	For testing in cell culture applications, please filter before use. Note that you may experience some loss of protein during the filtration process.
Storage:	Store at -80°C.
Stability:	Stable for 12 months from the date of receipt of the product under proper storage and handling conditions. Avoid repeated freeze-thaw cycles.
RefSeq:	<u>NP_066972</u>
Locus ID:	23406
UniProt ID:	<u>Q14019</u> , <u>A0A384MTY2</u>
RefSeq Size:	1893



[View online »](#)

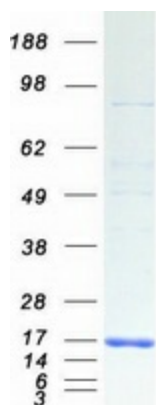
Cytogenetics: 16q24.1

RefSeq ORF: 426

Synonyms: CLP

Summary: This gene encodes one of the numerous actin-binding proteins which regulate the actin cytoskeleton. This protein binds F-actin, and also interacts with 5-lipoxygenase, which is the first committed enzyme in leukotriene biosynthesis. Although this gene has been reported to map to chromosome 17 in the Smith-Magenis syndrome region, the best alignments for this gene are to chromosome 16. The Smith-Magenis syndrome region is the site of two related pseudogenes. [provided by RefSeq, Jul 2008]

Product images:



Coomassie blue staining of purified COTL1 protein (Cat# TP304055). The protein was produced from HEK293T cells transfected with COTL1 cDNA clone (Cat# [RC204055]) using MegaTran 2.0 (Cat# [TT210002]).