

## Product datasheet for **TP304044**

### SAT2 (NM\_133491) Human Recombinant Protein

#### Product data:

Product Type:	Recombinant Proteins
Description:	Recombinant protein of human spermidine/spermine N1-acetyltransferase family member 2 (SAT2)
Species:	Human
Expression Host:	HEK293T
Expression cDNA Clone or AA Sequence:	>RC204044 protein sequence Red=Cloning site Green=Tags(s)

MASVRIREAKEGDCGDILRLIRELAEFEKLSQVKISEEALRADGFGDNPFYHCLVAEILPAPGKLLGPC  
VVGYGIYFYIYSTWKGRTIYLEDIYVMPEYRGQGIGSKIKKVAEVALDKGCSQFRLAVLDWNQRAMDLY  
KALGAQDLTEAEGWHFFCFQGEATRKLAKG

TRTRPLEQKLISEEDLAANDILDYKDDDDKV

Tag:	C-Myc/DDK
Predicted MW:	19 kDa
Concentration:	>50 ug/mL as determined by microplate BCA method
Purity:	> 80% as determined by SDS-PAGE and Coomassie blue staining
Buffer:	25 mM Tris.HCl, pH 7.3, 100 mM glycine, 10% glycerol
Preparation:	Recombinant protein was captured through anti-DDK affinity column followed by conventional chromatography steps.
Storage:	Store at -80°C.
Stability:	Stable for 12 months from the date of receipt of the product under proper storage and handling conditions. Avoid repeated freeze-thaw cycles.
RefSeq:	<u><a href="#">NP_597998</a></u>
Locus ID:	112483
UniProt ID:	<u><a href="#">Q96F10</a></u>
RefSeq Size:	983
Cytogenetics:	17p13.1



[View online »](#)

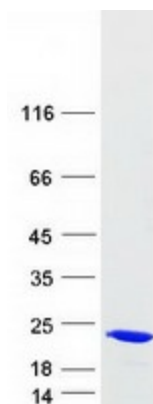
RefSeq ORF: 510

Synonyms: SSAT2

Summary: Enzyme which catalyzes the acetylation of polyamines. Substrate specificity: norspermidine > spermidine = spermine >> N(1)acetylspermine = putrescine.[UniProtKB/Swiss-Prot Function]

Protein Pathways: Arginine and proline metabolism, Metabolic pathways

### Product images:



Coomassie blue staining of purified SAT2 protein (Cat# TP304044). The protein was produced from HEK293T cells transfected with SAT2 cDNA clone (Cat# [RC204044]) using MegaTran 2.0 (Cat# [TT210002]).