

Product datasheet for **TP304037L**

TLE 1 (TLE1) (NM_005077) Human Recombinant Protein

Product data:

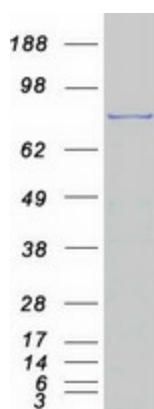
Product Type:	Recombinant Proteins
Description:	Recombinant protein of human transducin-like enhancer of split 1 (E(sp1) homolog, Drosophila) (TLE1), 1 mg
Species:	Human
Expression Host:	HEK293T
Expression cDNA Clone or AA Sequence:	>RC204037 protein sequence Red =Cloning site Green =Tags(s)
	<p>MFPQSRHPTPHQAAGQPFFKFTIPESLDRIKEEFQLQAQYHSLKLECEKLASEKTEMQRHYVMYYEMSYG LNIEMHKQTEIAKRLNTICAQVIPFLSQEHQQQVAQAVERAKQVTMAELNAIIGQQQLQAQHLSHGHGPP VPLTPHPSGLQPPGIPPLGGSAGLLALSSALSGQSHLAIKDDKKHHDAAEHHRDREPGTNSLLVPDSLGRG TDKRRNGPEFSNDIKKRKVDDKSSHYSDGDKSDDNLVVDVSNEDPSSPRASPAHSPRENGIDKNRLLK KDASSSPASTASSASSTSLKSKEMSLHEKASTPVLKSSSTPTPRSDMPTPGTSATPGLRPGLGKPPAIDPL VNQAAAGLRTPLAVPGYPAPFGMVPHAGMNGELTSPGAAYASLHNMSPPQMSAAAAAAVAVYGRSPMVG FDPPPMMRVPTIPPNLGIPGGKPAYSFHVTADGQMQPVPFPDALIGPGIPRHARQINTLNHGVEVCAV TISNPTRHVYTTGGKGCVKVWDISHPGNKSPVSQLDCLNRDNYIRSKLLPDGCTLIVGGEASTLSIWDLA APTPRIKAELTSSAPACYALAIKSPDSKVCFCSSDGNIAVWDLHNQTLVRQFQGHDTGASCIDISNDGTK LWTGGLDNTVRSWDLREGRQLQHDFTSQIFSLGYCPTGEWLAVGMESSNVEVLHVNKPKDKYQLHLLHESC VLSLKFAYCGKWFVSTGKDNLLNAWRTPYGASIFQSKESSVLSCDISVDDKYIVTGSGDKKATVYEVII</p> <p>TRTRPLEQKLISEEDLAANDILDYKDDDDKV</p>
Tag:	C-Myc/DDK
Predicted MW:	83 kDa
Concentration:	>0.05 µg/µL as determined by microplate BCA method
Purity:	> 80% as determined by SDS-PAGE and Coomassie blue staining
Buffer:	25 mM Tris-HCl, 100 mM glycine, pH 7.3, 10% glycerol
Preparation:	Recombinant protein was captured through anti-DDK affinity column followed by conventional chromatography steps.
Note:	For testing in cell culture applications, please filter before use. Note that you may experience some loss of protein during the filtration process.



[View online »](#)

Storage:	Store at -80°C.
Stability:	Stable for 12 months from the date of receipt of the product under proper storage and handling conditions. Avoid repeated freeze-thaw cycles.
RefSeq:	NP_005068
Locus ID:	7088
UniProt ID:	Q04724 , Q59EF7
RefSeq Size:	3283
Cytogenetics:	9q21.32
RefSeq ORF:	2310
Synonyms:	ESG; ESG1; GRG1
Summary:	Transcriptional corepressor that binds to a number of transcription factors. Inhibits NF-kappa-B-regulated gene expression. Inhibits the transcriptional activation mediated by FOXA2, and by CTNNB1 and TCF family members in Wnt signaling. The effects of full-length TLE family members may be modulated by association with dominant-negative AES. Unusual function as coactivator for ESRRG.[UniProtKB/Swiss-Prot Function]
Protein Families:	Transcription Factors

Product images:



Coomassie blue staining of purified TLE1 protein (Cat# [TP304037]). The protein was produced from HEK293T cells transfected with TLE1 cDNA clone (Cat# [RC204037]) using MegaTran 2.0 (Cat# [TT210002]).