

Product datasheet for **TP304026L**

MED8 (NM_201542) Human Recombinant Protein

Product data:

Product Type:	Recombinant Proteins
Description:	Recombinant protein of human mediator complex subunit 8 (MED8), transcript variant 1, 1 mg
Species:	Human
Expression Host:	HEK293T
Expression cDNA	>RC204026 protein sequence
Clone or AA Sequence:	Red=Cloning site Green=Tags(s)

MRQTEGRVPVFSHEVWPDHLRTPDPEVEEQEQLTTDAARIGADAAQKQIQSLNKMCSNLLEKISKEER
EESGGLRPNKQTFNPTDTNALVAAVAFGKGLSNWRPSGSSGPGQAGQPGAGTILAGTSGLQQVQMAGAP
SQQQPMLSGVQMAQAGQPGKMPGSIKTNIKSASMHPYQR

TRTRPLEQKLISEEDLAANDILDYKDDDDKV

Tag:	C-Myc/DDK
Predicted MW:	28.9 kDa
Concentration:	>0.05 µg/µL as determined by microplate BCA method
Purity:	> 80% as determined by SDS-PAGE and Coomassie blue staining
Buffer:	25 mM Tris-HCl, 100 mM glycine, pH 7.3, 10% glycerol
Preparation:	Recombinant protein was captured through anti-DDK affinity column followed by conventional chromatography steps.
Note:	For testing in cell culture applications, please filter before use. Note that you may experience some loss of protein during the filtration process.
Storage:	Store at -80°C.
Stability:	Stable for 12 months from the date of receipt of the product under proper storage and handling conditions. Avoid repeated freeze-thaw cycles.
RefSeq:	NP_963836
Locus ID:	112950
UniProt ID:	Q96G25
RefSeq Size:	1989



[View online »](#)

Cytogenetics: 1p34.2

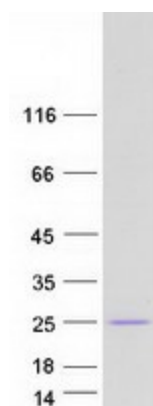
RefSeq ORF: 537

Synonyms: ARC32

Summary: This gene encodes a protein component of the mediator complex, which aids in transcriptional activation through interaction with RNA polymerase II and gene-specific transcription factors. The encoded protein may also function in ubiquitin ligation and protein degradation. Alternatively spliced transcript variants encoding multiple isoforms have been observed for this gene. [provided by RefSeq, Jan 2013]

Protein Families: Druggable Genome, Transcription Factors

Product images:



Coomassie blue staining of purified MED8 protein (Cat# [TP304026]). The protein was produced from HEK293T cells transfected with MED8 cDNA clone (Cat# [RC204026]) using MegaTran 2.0 (Cat# [TT210002]).