

## Product datasheet for **TP304025L**

### FAM86A (EEF2KMT) (NM\_201400) Human Recombinant Protein

#### Product data:

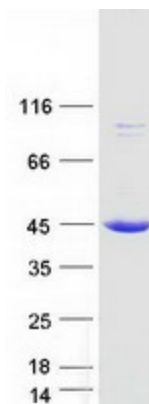
Product Type:	Recombinant Proteins
Description:	Recombinant protein of human family with sequence similarity 86, member A (FAM86A), transcript variant 1, 1 mg
Species:	Human
Expression Host:	HEK293T
Expression cDNA Clone or AA Sequence:	>RC204025 protein sequence <b>Red</b> =Cloning site <b>Green</b> =Tags(s)
	<p>MAPEENAGTELLLQSFERRFLAARTLRSFPWQSLEAKLRDSSSELLRDILHKTVKHPVCVKHPPSVKYA RCFLSELIKKHEAVHTEPLDELYEALAETLMAKESTQGHRSYLLPSGGSVTLSESTAIISYGTTGLVTWD AALYLAEWAIENPAVFTNRTVLELGSGAGLTGLAICKMCRPRAYIFSDCHSRVLEQLRGNVLLNGLSLEA DITAKLDSRVTVAQLDWDVATVHQLSAFQPDVIAADVLYCPEAIMSLVGLRRLAACREDQRAPEVYV AFTVRNPETCQLFTTELGRAGIRWEVEPRHEQKLFPEEHLAMMLNLT</p> <p><b>TRTRPLEQKLISEEDLAANDILDYKDDDDKV</b></p>
Tag:	C-Myc/DDK
Predicted MW:	36.7 kDa
Concentration:	>0.05 µg/µL as determined by microplate BCA method
Purity:	> 80% as determined by SDS-PAGE and Coomassie blue staining
Buffer:	25 mM Tris-HCl, 100 mM glycine, pH 7.3, 10% glycerol
Preparation:	Recombinant protein was captured through anti-DDK affinity column followed by conventional chromatography steps.
Note:	For testing in cell culture applications, please filter before use. Note that you may experience some loss of protein during the filtration process.
Storage:	Store at -80°C.
Stability:	Stable for 12 months from the date of receipt of the product under proper storage and handling conditions. Avoid repeated freeze-thaw cycles.
RefSeq:	<a href="#">NP_958802</a>
Locus ID:	196483



[View online »](#)

UniProt ID:	<a href="#">Q96G04</a>
RefSeq Size:	2411
Cytogenetics:	16p13.3
RefSeq ORF:	990
Synonyms:	eEF2-KMT; EFM3; FAM86A; SB153
Summary:	Catalyzes the trimethylation of eukaryotic elongation factor 2 (EEF2) on 'Lys-525'. [UniProtKB/Swiss-Prot Function]

### Product images:



Coomassie blue staining of purified EEF2KMT protein (Cat# [TP304025]). The protein was produced from HEK293T cells transfected with EEF2KMT cDNA clone (Cat# [RC204025]) using MegaTran 2.0 (Cat# [TT210002]).