

Product datasheet for **TP304025**

FAM86A (EEF2KMT) (NM_201400) Human Recombinant Protein

Product data:

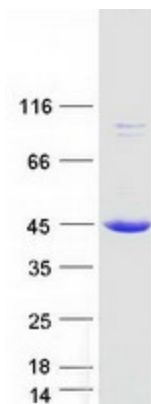
| | |
|---------------------------------------|--|
| Product Type: | Recombinant Proteins |
| Description: | Recombinant protein of human family with sequence similarity 86, member A (FAM86A), transcript variant 1, 20 µg |
| Species: | Human |
| Expression Host: | HEK293T |
| Expression cDNA Clone or AA Sequence: | >RC204025 protein sequence Red =Cloning site Green =Tags(s) |
| | <p>MAPEENAGTELLLQSFERRFLAARTLRSFPWQSLEAKLRDSSSELLRDILHKTVKHPVCVKHPPSVKYA RCFLSELIKKHEAVHTEPLDELYEALAETLMAKESTQGHRSYLLPSGGSVTLSESTAIISYGTTGLVTWD AALYLAEWAIENPAVFTNRTVLELGSGAGLTGLAICKMCRPRAYIFSDCHSRVLEQLRGNVLLNGLSLEA DITAKLDSRVTVAQLDWDVATVHQLSAFQPDVIAADVLYCPEAIMSLVGLRRLAACREDQRAPEVYV AFTVRNPETCQLFTTELGRAGIRWEVEPRHEQKLFPEEHLAMMLNLT</p> <p>TRTRPLEQKLISEEDLAANDILDYKDDDDKV</p> |
| Tag: | C-Myc/DDK |
| Predicted MW: | 36.7 kDa |
| Concentration: | >0.05 µg/µL as determined by microplate BCA method |
| Purity: | > 80% as determined by SDS-PAGE and Coomassie blue staining |
| Buffer: | 25 mM Tris-HCl, 100 mM glycine, pH 7.3, 10% glycerol |
| Preparation: | Recombinant protein was captured through anti-DDK affinity column followed by conventional chromatography steps. |
| Note: | For testing in cell culture applications, please filter before use. Note that you may experience some loss of protein during the filtration process. |
| Storage: | Store at -80°C. |
| Stability: | Stable for 12 months from the date of receipt of the product under proper storage and handling conditions. Avoid repeated freeze-thaw cycles. |
| RefSeq: | NP_958802 |
| Locus ID: | 196483 |



[View online »](#)

| | |
|---------------|--|
| UniProt ID: | Q96G04 |
| RefSeq Size: | 2411 |
| Cytogenetics: | 16p13.3 |
| RefSeq ORF: | 990 |
| Synonyms: | eEF2-KMT; EFM3; FAM86A; SB153 |
| Summary: | Catalyzes the trimethylation of eukaryotic elongation factor 2 (EEF2) on 'Lys-525'. [UniProtKB/Swiss-Prot Function] |

Product images:



Coomassie blue staining of purified EEF2KMT protein (Cat# TP304025). The protein was produced from HEK293T cells transfected with EEF2KMT cDNA clone (Cat# [RC204025]) using MegaTran 2.0 (Cat# [TT210002]).