

Product datasheet for **TP304024L**

NOSIP (NM_015953) Human Recombinant Protein

Product data:

Product Type: Recombinant Proteins

Description: Recombinant protein of human nitric oxide synthase interacting protein (NOSIP), 1 mg

Species: Human

Expression Host: HEK293T

Expression cDNA Clone or AA Sequence: >RC204024 protein sequence
Red=Cloning site **Green**=Tags(s)

MTRHGKNCTAGAVYTYHEKKKDTAASGYGTQNIIRLSRDAVKDFDCCCLSLQPCHDPVWTPDGYLYEREA
LEYILHQKKEIARQMKAYEKQRGTRREEQKELQRAASQDHVRGFLEKESAIVSRPLNPFTAKALSGTSPD
DVQPGPSVGPPSKDKDKVLPFWIPSLTPEAKATKLEKPSRTVTCMSGKPLRMSDLTPVHFTPLDSSVD
RVGLITRSERYVCAVTRDLSNATPCAVLRPSGAVVTLECVKLRKDMVDPVTGDKLTDRIIVLQRGG
TGFAGSGVKLQAEKSRPVMQA

TRTRPLEQKLISEEDLAANDILDYKDDDDKV

Tag: C-Myc/DDK

Predicted MW: 33 kDa

Concentration: >0.05 µg/µL as determined by microplate BCA method

Purity: > 80% as determined by SDS-PAGE and Coomassie blue staining

Buffer: 25 mM Tris-HCl, 100 mM glycine, pH 7.3, 10% glycerol

Preparation: Recombinant protein was captured through anti-DDK affinity column followed by conventional chromatography steps.

Note: For testing in cell culture applications, please filter before use. Note that you may experience some loss of protein during the filtration process.

Storage: Store at -80°C.

Stability: Stable for 12 months from the date of receipt of the product under proper storage and handling conditions. Avoid repeated freeze-thaw cycles.

RefSeq: [NP_057037](#)

Locus ID: 51070



[View online »](#)

UniProt ID: [Q9Y314](#)

RefSeq Size: 1367

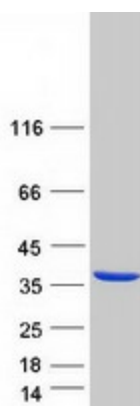
Cytogenetics: 19q13.33

RefSeq ORF: 903

Synonyms: CGI-25

Summary: The protein encoded by this gene may modulate the activity and localization of nitric oxide synthase (endothelial and neuronal) and thus nitric oxide production. Alternative splicing results in multiple transcript variants that encode the same protein. [provided by RefSeq, Aug 2012]

Product images:



Coomassie blue staining of purified NOSIP protein (Cat# [TP304024]). The protein was produced from HEK293T cells transfected with NOSIP cDNA clone (Cat# [RC204024]) using MegaTran 2.0 (Cat# [TT210002]).