

Product datasheet for TP304018L

MAGEF1 (NM_022149) Human Recombinant Protein

Product data:

Product Type: Recombinant Proteins

Description: Recombinant protein of human melanoma antigen family F, 1 (MAGEF1), 1 mg

Species: Human

Expression Host: HEK293T

Expression cDNA Clone or AA Sequence: >RC204018 protein sequence
Red=Cloning site Green=Tags(s)

MLQTPESRGLPVPQAEGEKDGGHGGETRAPASQERPKEELGAGREEGAAEPALTRKGARALAAKSLARR
RAYRRLNRTVAELVQFLLVKDKKKSPITRSEMVKYVIGDLKILFPDIIARAAEHLRYVFGFELKQFDRKH
HTYILINKLKPLEEEEEEDLGGDGPRLGLLMMILGLIYMRGNSAREAQVWEMLRRLGVQPSKYHFLFGY
PKRLIMEDFVQQRYSYRRVPHTNPPAYEFSWGPRSNLEISKMEVLGFVAKLHKKEPQHWPVQYREALAD
EADRARAKARAEASMRARASARAGIHLW

TRTRPLEQKLISEEDLAANDILDYKDDDDKV

Tag: C-Myc/DDK

Predicted MW: 35 kDa

Concentration: >0.05 µg/µL as determined by microplate BCA method

Purity: > 80% as determined by SDS-PAGE and Coomassie blue staining

Buffer: 25 mM Tris-HCl, 100 mM glycine, pH 7.3, 10% glycerol

Preparation: Recombinant protein was captured through anti-DDK affinity column followed by conventional chromatography steps.

Note: For testing in cell culture applications, please filter before use. Note that you may experience some loss of protein during the filtration process.

Storage: Store at -80°C.

Stability: Stable for 12 months from the date of receipt of the product under proper storage and handling conditions. Avoid repeated freeze-thaw cycles.

RefSeq: [NP_071432](#)

Locus ID: 64110



[View online »](#)

UniProt ID: [Q9HAY2](#)

RefSeq Size: 1700

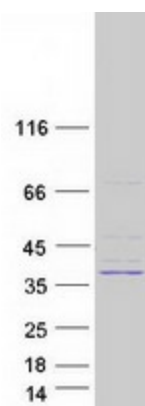
Cytogenetics: 3q27.1

RefSeq ORF: 924

Synonyms: MAGE-F1

Summary: This intronless gene encodes a member of the MAGE superfamily. It is ubiquitously expressed in normal tissues and in tumor cells. This gene includes a microsatellite repeat in the coding region. [provided by RefSeq, Jul 2008]

Product images:



Coomassie blue staining of purified MAGEF1 protein (Cat# [TP304018]). The protein was produced from HEK293T cells transfected with MAGEF1 cDNA clone (Cat# [RC204018]) using MegaTran 2.0 (Cat# [TT210002]).