

Product datasheet for **TP304018**

MAGEF1 (NM_022149) Human Recombinant Protein

Product data:

Product Type:	Recombinant Proteins
Description:	Recombinant protein of human melanoma antigen family F, 1 (MAGEF1), 20 µg
Species:	Human
Expression Host:	HEK293T
Expression cDNA Clone or AA Sequence:	>RC204018 protein sequence Red =Cloning site Green =Tags(s)
	<p>MLQTPESRGLPVPQAEGEKDGGHGGETRAPTASQERPKEELGAGREEGAAEPALTRKGARALAAKSLARR RAYRRLNRTVAELVQFLLVKDKKKSPITRSEMVKYVIGDLKILFPDIIARAAEHLRYVFGFELKQFDRKH HTYILINKLKPLEEEEEEDLGGDGPRLGLLMMILGLIYMRGNSAREAQVWEMLRRLGVQPSKYHFLFGY PKRLIMEDFVQQRYSYRRVPHTNPPAYEFSWGPRSNLEISKMEVLGFVAKLHKKEPQHWPVQYREALAD EADRARAKARAEASMRARASARAGIHLW</p> <p>TRTRPLEQKLISEEDLAANDILDYKDDDDKV</p>
Tag:	C-Myc/DDK
Predicted MW:	35 kDa
Concentration:	>0.05 µg/µL as determined by microplate BCA method
Purity:	> 80% as determined by SDS-PAGE and Coomassie blue staining
Buffer:	25 mM Tris-HCl, 100 mM glycine, pH 7.3, 10% glycerol
Preparation:	Recombinant protein was captured through anti-DDK affinity column followed by conventional chromatography steps.
Note:	For testing in cell culture applications, please filter before use. Note that you may experience some loss of protein during the filtration process.
Storage:	Store at -80°C.
Stability:	Stable for 12 months from the date of receipt of the product under proper storage and handling conditions. Avoid repeated freeze-thaw cycles.
RefSeq:	<u>NP_071432</u>
Locus ID:	64110



[View online »](#)

UniProt ID: Q9HAY2

RefSeq Size: 1700

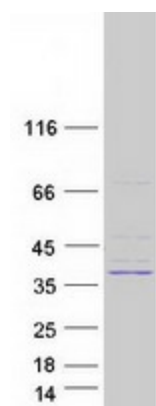
Cytogenetics: 3q27.1

RefSeq ORF: 924

Synonyms: MAGE-F1

Summary: This intronless gene encodes a member of the MAGE superfamily. It is ubiquitously expressed in normal tissues and in tumor cells. This gene includes a microsatellite repeat in the coding region. [provided by RefSeq, Jul 2008]

Product images:



Coomassie blue staining of purified MAGEF1 protein (Cat# TP304018). The protein was produced from HEK293T cells transfected with MAGEF1 cDNA clone (Cat# [RC204018]) using MegaTran 2.0 (Cat# [TT210002]).