

## Product datasheet for TP304011L

### SF20 (MYDGF) (NM\_019107) Human Recombinant Protein

#### Product data:

Product Type:	Recombinant Proteins
Description:	Recombinant protein of human chromosome 19 open reading frame 10 (C19orf10), 1 mg
Species:	Human
Expression Host:	HEK293T
Expression cDNA Clone or AA Sequence:	>RC204011 protein sequence Red=Cloning site Green=Tags(s)
	MAAPSGGWNGV GASLWAALLLGAVALRPAEAVSEPTTVAFDVVRPGGVVHSFSHNVGPDKYTCMFTYASQ GGTNEQWQMSLGTSEDHQHFTCTIWRPQGKSYLYFTQFKAEVARGAEIEYAMAYSKAAFERESDVPLKTEE FEVTKTAVAH RPGA FKAELSKLVIVAKASRTEL
	TRTRPLEQKLISEEDLAANDILDYKDDDDKV
Tag:	C-Myc/DDK
Predicted MW:	18.6 kDa
Concentration:	>0.05 µg/µL as determined by microplate BCA method
Purity:	> 80% as determined by SDS-PAGE and Coomassie blue staining
Buffer:	25 mM Tris-HCl, 100 mM glycine, pH 7.3, 10% glycerol
Preparation:	Recombinant protein was captured through anti-DDK affinity column followed by conventional chromatography steps.
Note:	For testing in cell culture applications, please filter before use. Note that you may experience some loss of protein during the filtration process.
Storage:	Store at -80°C.
Stability:	Stable for 12 months from the date of receipt of the product under proper storage and handling conditions. Avoid repeated freeze-thaw cycles.
RefSeq:	<a href="#">NP_061980</a>
Locus ID:	56005
UniProt ID:	<a href="#">Q969H8</a>
RefSeq Size:	1067



[View online »](#)

Cytogenetics: 19p13.3

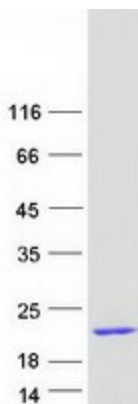
RefSeq ORF: 519

Synonyms: C19orf10; EUROIMAGE1875335; IL25; IL27; IL27w; R33729\_1; SF20

Summary: The protein encoded by this gene was previously thought to support proliferation of lymphoid cells and was considered an interleukin. However, this activity has not been reproducible and the function of this protein is currently unknown. [provided by RefSeq, Jul 2008]

Protein Families: Secreted Protein

### Product images:



Coomassie blue staining of purified MYDGF protein (Cat# [TP304011]). The protein was produced from HEK293T cells transfected with MYDGF cDNA clone (Cat# [RC204011]) using MegaTran 2.0 (Cat# [TT210002]).