

Product datasheet for **TP304006M**

RPL11 (NM_000975) Human Recombinant Protein

Product data:

Product Type:	Recombinant Proteins
Description:	Recombinant protein of human ribosomal protein L11 (RPL11), 100 µg
Species:	Human
Expression Host:	HEK293T
Expression cDNA Clone or AA Sequence:	>RC204006 protein sequence Red =Cloning site Green =Tags(s)
	 MADQGEKENPMRELRIKRLCLNICVGESDRLTRAAKVLEQLTGQTPVFSKARYTVRSFGIRRNEKIAVH CTVRGAKAEEILEKGLKVREYELRKNFSDTGNFGFGIQEHIDLGIKYDPSIGIYGLDFYWLGRPGFSI ADKKRRTGCIGAKHRISKEEAMRWFQKQYDGIILPGK TRTRPLEQKLISEEDLAANDILDYKDDDDKV
Tag:	C-Myc/DDK
Predicted MW:	20.1 kDa
Concentration:	>0.05 µg/µL as determined by microplate BCA method
Purity:	> 80% as determined by SDS-PAGE and Coomassie blue staining
Buffer:	25 mM Tris-HCl, 100 mM glycine, pH 7.3, 10% glycerol
Preparation:	Recombinant protein was captured through anti-DDK affinity column followed by conventional chromatography steps.
Note:	For testing in cell culture applications, please filter before use. Note that you may experience some loss of protein during the filtration process.
Storage:	Store at -80°C.
Stability:	Stable for 12 months from the date of receipt of the product under proper storage and handling conditions. Avoid repeated freeze-thaw cycles.
RefSeq:	<u>NP_000966</u>
Locus ID:	6135
UniProt ID:	<u>P62913</u> , <u>Q5VVD0</u>
RefSeq Size:	644



[View online »](#)

Cytogenetics: 1p36.11

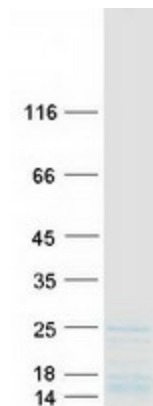
RefSeq ORF: 534

Synonyms: DBA7; GIG34; L11; uL5

Summary: Ribosomes, the organelles that catalyze protein synthesis, consist of a small 40S subunit and a large 60S subunit. Together these subunits are composed of 4 RNA species and approximately 80 structurally distinct proteins. This gene encodes a ribosomal protein that is a component of the 60S subunit. The protein belongs to the L5P family of ribosomal proteins. It is located in the cytoplasm. The protein probably associates with the 5S rRNA. Alternatively spliced transcript variants encoding different isoforms have been found for this gene. As is typical for genes encoding ribosomal proteins, there are multiple processed pseudogenes of this gene dispersed through the genome. [provided by RefSeq, Dec 2010]

Protein Pathways: Ribosome

Product images:



Coomassie blue staining of purified RPL11 protein (Cat# [TP304006]). The protein was produced from HEK293T cells transfected with RPL11 cDNA clone (Cat# [RC204006]) using MegaTran 2.0 (Cat# [TT210002]).