

Product datasheet for **TP303990M**

RCN1 (NM_002901) Human Recombinant Protein

Product data:

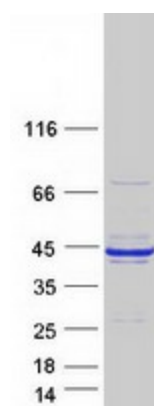
Product Type:	Recombinant Proteins
Description:	Recombinant protein of human reticulocalbin 1, EF-hand calcium binding domain (RCN1), 100 µg
Species:	Human
Expression Host:	HEK293T
Expression cDNA Clone or AA Sequence:	>RC203990 protein sequence Red =Cloning site Green =Tags(s)
	MARGGRGRRRLGLALGLLLALVLAAPRVLRKPTVRKERVVRPDSELGERPPEDNQSFQYDHEAFLGKEDSK TFDQLTPDESKERLGKIVDRIDNDGDGFVTTEELKTWIKRVQKRYIFDNVAKVWKDYDRDKDDKISWEEY KQATYGYLGNPAEFHDSSDHHTFKKMLPRDERRFKAADLNGDLTATREEFTAFHPEEFHMKIEIVVLE TLEDIDKNGDGFVDQDEYIADMFSHEENGPEPDWVLSEREQFNEFRDLNKGDKLKDKEIRHWILPQDYD H AQAEARHLVYESDKNKDEKLTKEEILENWNMFVGSQATNYGEDLTKNHDEL
	TRTRPLEQKLISEEDLAANDILDYKDDDDKV
Tag:	C-Myc/DDK
Predicted MW:	35.8 kDa
Concentration:	>0.05 µg/µL as determined by microplate BCA method
Purity:	> 80% as determined by SDS-PAGE and Coomassie blue staining
Buffer:	25 mM Tris-HCl, 100 mM glycine, pH 7.3, 10% glycerol
Preparation:	Recombinant protein was captured through anti-DDK affinity column followed by conventional chromatography steps.
Note:	For testing in cell culture applications, please filter before use. Note that you may experience some loss of protein during the filtration process.
Storage:	Store at -80°C.
Stability:	Stable for 12 months from the date of receipt of the product under proper storage and handling conditions. Avoid repeated freeze-thaw cycles.
RefSeq:	<u>NP_002892</u>



[View online »](#)

Locus ID:	5954
UniProt ID:	Q15293
RefSeq Size:	2529
Cytogenetics:	11p13
RefSeq ORF:	993
Synonyms:	HEL-S-84; PIG20; RCAL; RCN
Summary:	Reticulocalbin 1 is a calcium-binding protein located in the lumen of the ER. The protein contains six conserved regions with similarity to a high affinity Ca(+2)-binding motif, the EF-hand. High conservation of amino acid residues outside of these motifs, in comparison to mouse reticulocalbin, is consistent with a possible biochemical function besides that of calcium binding. In human endothelial and prostate cancer cell lines this protein localizes to the plasma membrane.[provided by RefSeq, Jan 2009]

Product images:



Coomassie blue staining of purified RCN1 protein (Cat# [TP303990]). The protein was produced from HEK293T cells transfected with RCN1 cDNA clone (Cat# [RC203990]) using MegaTran 2.0 (Cat# [TT210002]).