

Product datasheet for **TP303978M**

GIMAP5 (NM_018384) Human Recombinant Protein

Product data:

| | |
|-----------------------|--|
| Product Type: | Recombinant Proteins |
| Description: | Recombinant protein of human GTPase, IMAP family member 5 (GIMAP5), 100 µg |
| Species: | Human |
| Expression Host: | HEK293T |
| Expression cDNA | >RC203978 protein sequence |
| Clone or AA Sequence: | Red=Cloning site Green=Tags(s) |

MGGFQRGKYGTMAEGRSEDNLSATPPALRIILVVGKTGCGKSATGNSILGQPVFESKLRAQSVTRTCQVKT
GTWNGRKKVLVDTPSIFESQADTQELYKNIGDCYLLSAPGPHVLLLVQLGRFTAQDTVAIRKVKEVFGT
GAMRHVILFTHKEDLGGQALDDYVANTDNCSLKDLDVRECERRYCAFNNWGSVEEQRQQQAELLAVIERL
GREREGSFHSNDLFLDAQLLQRTGAGACQEDYRQYQAKVEWQVEKHKQELRENESENWAYKALLRVKHLML
LHYEIFVLLLLCSILFFIIFLFIHYI

TRTRPLEQKLISEEDLAANDILDYKDDDDKV

| | |
|----------------|--|
| Tag: | C-Myc/DDK |
| Predicted MW: | 34.7 kDa |
| Concentration: | >0.05 µg/µL as determined by microplate BCA method |
| Purity: | > 80% as determined by SDS-PAGE and Coomassie blue staining |
| Buffer: | 25 mM Tris-HCl, 100 mM glycine, pH 7.3, 10% glycerol |
| Preparation: | Recombinant protein was captured through anti-DDK affinity column followed by conventional chromatography steps. |
| Note: | For testing in cell culture applications, please filter before use. Note that you may experience some loss of protein during the filtration process. |
| Storage: | Store at -80°C. |
| Stability: | Stable for 12 months from the date of receipt of the product under proper storage and handling conditions. Avoid repeated freeze-thaw cycles. |
| RefSeq: | NP_060854 |
| Locus ID: | 55340 |



[View online »](#)

UniProt ID: [Q96F15](#), [A0A090N8P9](#)

RefSeq Size: 1895

Cytogenetics: 7q36.1

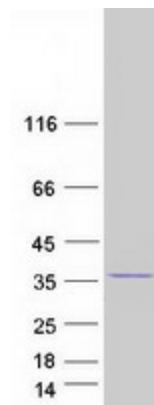
RefSeq ORF: 921

Synonyms: HIMAP3; IAN-5; IAN4; IAN4L1; IAN5; IMAP3; IROD

Summary: This gene encodes a protein belonging to the GTP-binding superfamily and to the immuno-associated nucleotide (IAN) subfamily of nucleotide-binding proteins. In humans, the IAN subfamily genes are located in a cluster at 7q36.1. This gene encodes an antiapoptotic protein that functions in T-cell survival. Polymorphisms in this gene are associated with systemic lupus erythematosus. Read-through transcription exists between this gene and the neighboring upstream GIMAP1 (GTPase, IMAP family member 1) gene. [provided by RefSeq, Dec 2010]

Protein Families: Transmembrane

Product images:



Coomassie blue staining of purified GIMAP5 protein (Cat# [TP303978]). The protein was produced from HEK293T cells transfected with GIMAP5 cDNA clone (Cat# [RC203978]) using MegaTran 2.0 (Cat# [TT210002]).