

Product datasheet for **TP303978L**

GIMAP5 (NM_018384) Human Recombinant Protein

Product data:

Product Type:	Recombinant Proteins
Description:	Recombinant protein of human GTPase, IMAP family member 5 (GIMAP5), 1 mg
Species:	Human
Expression Host:	HEK293T
Expression cDNA	>RC203978 protein sequence
Clone or AA Sequence:	Red=Cloning site Green=Tags(s)

MGGFQRGKYGTMAEGRSEDNLSATPPALRIILVVGKTGCGKSATGNSILGQPVFESKLRAQSVTRTCQVKT
GTWNGRKKVLVDTPSIFESQADTQELYKNIGDCYLLSAPGPHVLLLVQLGRFTAQDTVAIRKVKVKEVFGT
GAMRHVILFTHKEDLGGQALDDYVANTDNCSLKDLDVRECERRYCAFNNWGSVEEQRQQQAELLAVIERL
GREREGSFHSNDLFLDAQLLQRTGAGACQEDYRQYQAKVEWQVEKHKQELRENESENWAYKALLRVKHLML
LHYEIFVLLLSILFFIIFLFIFHYI

TRTRPLEQKLISEEDLAANDILDYKDDDDKV

Tag:	C-Myc/DDK
Predicted MW:	34.7 kDa
Concentration:	>0.05 µg/µL as determined by microplate BCA method
Purity:	> 80% as determined by SDS-PAGE and Coomassie blue staining
Buffer:	25 mM Tris-HCl, 100 mM glycine, pH 7.3, 10% glycerol
Preparation:	Recombinant protein was captured through anti-DDK affinity column followed by conventional chromatography steps.
Note:	For testing in cell culture applications, please filter before use. Note that you may experience some loss of protein during the filtration process.
Storage:	Store at -80°C.
Stability:	Stable for 12 months from the date of receipt of the product under proper storage and handling conditions. Avoid repeated freeze-thaw cycles.
RefSeq:	NP_060854
Locus ID:	55340



[View online »](#)

UniProt ID: [Q96F15](#), [A0A090N8P9](#)

RefSeq Size: 1895

Cytogenetics: 7q36.1

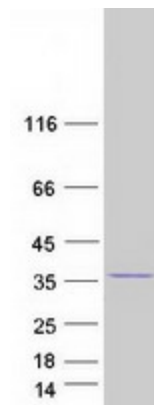
RefSeq ORF: 921

Synonyms: HIMAP3; IAN-5; IAN4; IAN4L1; IAN5; IMAP3; IROD

Summary: This gene encodes a protein belonging to the GTP-binding superfamily and to the immuno-associated nucleotide (IAN) subfamily of nucleotide-binding proteins. In humans, the IAN subfamily genes are located in a cluster at 7q36.1. This gene encodes an antiapoptotic protein that functions in T-cell survival. Polymorphisms in this gene are associated with systemic lupus erythematosus. Read-through transcription exists between this gene and the neighboring upstream GIMAP1 (GTPase, IMAP family member 1) gene. [provided by RefSeq, Dec 2010]

Protein Families: Transmembrane

Product images:



Coomassie blue staining of purified GIMAP5 protein (Cat# [TP303978]). The protein was produced from HEK293T cells transfected with GIMAP5 cDNA clone (Cat# [RC203978]) using MegaTran 2.0 (Cat# [TT210002]).