

Product datasheet for **TP303978**

GIMAP5 (NM_018384) Human Recombinant Protein

Product data:

Product Type: Recombinant Proteins
Description: Recombinant protein of human GTPase, IMAP family member 5 (GIMAP5), 20 µg
Species: Human
Expression Host: HEK293T
Expression cDNA >RC203978 protein sequence
Clone or AA Sequence: **Red**=Cloning site **Green**=Tags(s)

MGGFQRGKYGTMAEGRSEDNLSATPPALRIILVVGKTGCGKSATGNSILGQPVFESKLRAQSVTRTCQVKT
GTWNGRKKVLVDTPSIFESQADTQELYKNIGDCYLLSAPGPHVLLLVQLGRFTAQDTVAIRKVKEVFGT
GAMRHVILFTHKEDLGGQALDDYVANTDNCSLKDLDVRECERRYCAFNNWGSVEEQRQQQAELLAVIERL
GREREGSFHSNDLFLDAQLLQRTGAGACQEDYRQYQAKVEWQVEKHKQELRENESENWAYKALLRVKHLML
LHYEIFVLLLSILFFIIFLFIFYI

TRTRPLEQKLISEEDLAANDILDYKDDDDKV

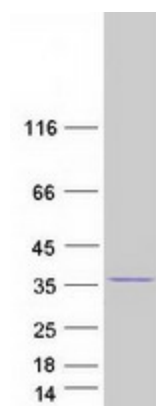
Tag: C-Myc/DDK
Predicted MW: 34.7 kDa
Concentration: >0.05 µg/µL as determined by microplate BCA method
Purity: > 80% as determined by SDS-PAGE and Coomassie blue staining
Buffer: 25 mM Tris-HCl, 100 mM glycine, pH 7.3, 10% glycerol
Preparation: Recombinant protein was captured through anti-DDK affinity column followed by conventional chromatography steps.
Note: For testing in cell culture applications, please filter before use. Note that you may experience some loss of protein during the filtration process.
Storage: Store at -80°C.
Stability: Stable for 12 months from the date of receipt of the product under proper storage and handling conditions. Avoid repeated freeze-thaw cycles.
RefSeq: [NP_060854](#)
Locus ID: 55340



[View online »](#)

UniProt ID:	Q96F15 , A0A090N8P9
RefSeq Size:	1895
Cytogenetics:	7q36.1
RefSeq ORF:	921
Synonyms:	HIMAP3; IAN-5; IAN4; IAN4L1; IAN5; IMAP3; IROD
Summary:	This gene encodes a protein belonging to the GTP-binding superfamily and to the immuno-associated nucleotide (IAN) subfamily of nucleotide-binding proteins. In humans, the IAN subfamily genes are located in a cluster at 7q36.1. This gene encodes an antiapoptotic protein that functions in T-cell survival. Polymorphisms in this gene are associated with systemic lupus erythematosus. Read-through transcription exists between this gene and the neighboring upstream GIMAP1 (GTPase, IMAP family member 1) gene. [provided by RefSeq, Dec 2010]
Protein Families:	Transmembrane

Product images:



Coomassie blue staining of purified GIMAP5 protein (Cat# TP303978). The protein was produced from HEK293T cells transfected with GIMAP5 cDNA clone (Cat# [RC203978]) using MegaTran 2.0 (Cat# [TT210002]).