

## Product datasheet for TP303975

### MRPS28 (NM\_014018) Human Recombinant Protein

#### Product data:

Product Type:	Recombinant Proteins
Description:	Recombinant protein of human mitochondrial ribosomal protein S28 (MRPS28), nuclear gene encoding mitochondrial protein, 20 µg
Species:	Human
Expression Host:	HEK293T
Expression cDNA Clone or AA Sequence:	>RC203975 protein sequence <b>Red</b> =Cloning site <b>Green</b> =Tags(s)
	MAALCRTRAVAAESHFLRVFLFFRPFGRVGTESGSESGSSNAKEPKTRAGGFASALERHSELLQKVEPLQ KGSPKNVESFASMLRHSPLTQMGPAKDKLVIGRIFHIVENDLYIDFGGKFKVCRRPEVDGEKYQKGTRV RLRLLDLELTSRFLGATTDTTVLEANAVLLGIQESKDSRSKEEHHEK
	<b>TRTRPLEQKLISEEDLAANDILDYKDDDDKV</b>
Tag:	C-Myc/DDK
Predicted MW:	20.7 kDa
Concentration:	>0.05 µg/µL as determined by microplate BCA method
Purity:	> 80% as determined by SDS-PAGE and Coomassie blue staining
Buffer:	25 mM Tris-HCl, 100 mM glycine, pH 7.3, 10% glycerol
Preparation:	Recombinant protein was captured through anti-DDK affinity column followed by conventional chromatography steps.
Note:	For testing in cell culture applications, please filter before use. Note that you may experience some loss of protein during the filtration process.
Storage:	Store at -80°C.
Stability:	Stable for 12 months from the date of receipt of the product under proper storage and handling conditions. Avoid repeated freeze-thaw cycles.
RefSeq:	<a href="#">NP_054737</a>
Locus ID:	28957
UniProt ID:	<a href="#">Q9Y2Q9</a> , <a href="#">A0A0S2Z563</a>



[View online »](#)

RefSeq Size: 724

Cytogenetics: 8q21.13

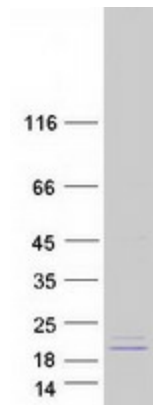
RefSeq ORF: 561

Synonyms: COXPD47; HSPC007; MRP-S28; MRP-S35; MRPS35

**Summary:** Mammalian mitochondrial ribosomal proteins are encoded by nuclear genes and help in protein synthesis within the mitochondrion. Mitochondrial ribosomes (mitoribosomes) consist of a small 28S subunit and a large 39S subunit. They have an estimated 75% protein to rRNA composition compared to prokaryotic ribosomes, where this ratio is reversed. Another difference between mammalian mitoribosomes and prokaryotic ribosomes is that the latter contain a 5S rRNA. Among different species, the proteins comprising the mitoribosome differ greatly in sequence, and sometimes in biochemical properties, which prevents easy recognition by sequence homology. This gene encodes a 28S subunit protein that has been called mitochondrial ribosomal protein S35 in the literature. [provided by RefSeq, Jul 2008]

**Protein Families:** Druggable Genome

### Product images:



Coomassie blue staining of purified MRPS28 protein (Cat# TP303975). The protein was produced from HEK293T cells transfected with MRPS28 cDNA clone (Cat# [RC203975]) using MegaTran 2.0 (Cat# [TT210002]).