

Product datasheet for **TP303973L**

RAB3A (NM_002866) Human Recombinant Protein

Product data:

Product Type:	Recombinant Proteins
Description:	Recombinant protein of human RAB3A, member RAS oncogene family (RAB3A), 1 mg
Species:	Human
Expression Host:	HEK293T
Expression cDNA Clone or AA Sequence:	>RC203973 protein sequence Red =Cloning site Green =Tags(s)
	 MASATDSRYGQKESDQNFDMFKILIIIGNSSVGKTSFLFRYADDSFTPAFVSTVGDIDFKVKTIYRNDKR IKLQIWDTAGQERYRTITTAYYRGAMGFILMYDITNEESFNAVQDWSTQIKTYSWDNAQVLLVGNKCDME DERVSSERGRQLADHLGFEFFEASAKDNINVKQTFERLVDVICEKMSLSLDTADPAVTGAKQGPQLSDQ QVPPHQDCAC TRTRPLEQKLISEEDLAANDILDYKDDDDKV
Tag:	C-Myc/DDK
Predicted MW:	24.8 kDa
Concentration:	>0.05 µg/µL as determined by microplate BCA method
Purity:	> 80% as determined by SDS-PAGE and Coomassie blue staining
Buffer:	25 mM Tris-HCl, 100 mM glycine, pH 7.3, 10% glycerol
Preparation:	Recombinant protein was captured through anti-DDK affinity column followed by conventional chromatography steps.
Note:	For testing in cell culture applications, please filter before use. Note that you may experience some loss of protein during the filtration process.
Storage:	Store at -80°C.
Stability:	Stable for 12 months from the date of receipt of the product under proper storage and handling conditions. Avoid repeated freeze-thaw cycles.
RefSeq:	NP_002857
Locus ID:	5864
UniProt ID:	P20336 , A0A024R717



[View online »](#)

RefSeq Size: 1528

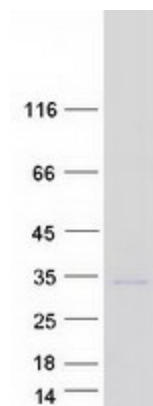
Cytogenetics: 19p13.11

RefSeq ORF: 660

Summary: Small GTP-binding protein that plays a central role in regulated exocytosis and secretion. Controls the recruitment, tethering and docking of secretory vesicles to the plasma membrane (By similarity). Upon stimulation, switches to its active GTP-bound form, cycles to vesicles and recruits effectors such as RIMS1, RIMS2, Rabphilin-3A/RPH3A, RPH3AL or SYTL4 to help the docking of vesicles onto the plasma membrane (By similarity). Upon GTP hydrolysis by GTPase-activating protein, dissociates from the vesicle membrane allowing the exocytosis to proceed (By similarity). Stimulates insulin secretion through interaction with RIMS2 or RPH3AL effectors in pancreatic beta cells (By similarity). Regulates calcium-dependent lysosome exocytosis and plasma membrane repair (PMR) via the interaction with 2 effectors, SYTL4 and myosin-9/MYH9 (PubMed:27325790). Acts as a positive regulator of acrosome content secretion in sperm cells by interacting with RIMS1 (PubMed:22248876, PubMed:30599141). Plays also a role in the regulation of dopamine release by interacting with synaptotagmin I/SYT (By similarity).[UniProtKB/Swiss-Prot Function]

Protein Families: Druggable Genome

Product images:



Coomassie blue staining of purified RAB3A protein (Cat# [TP303973]). The protein was produced from HEK293T cells transfected with RAB3A cDNA clone (Cat# [RC203973]) using MegaTran 2.0 (Cat# [TT210002]).